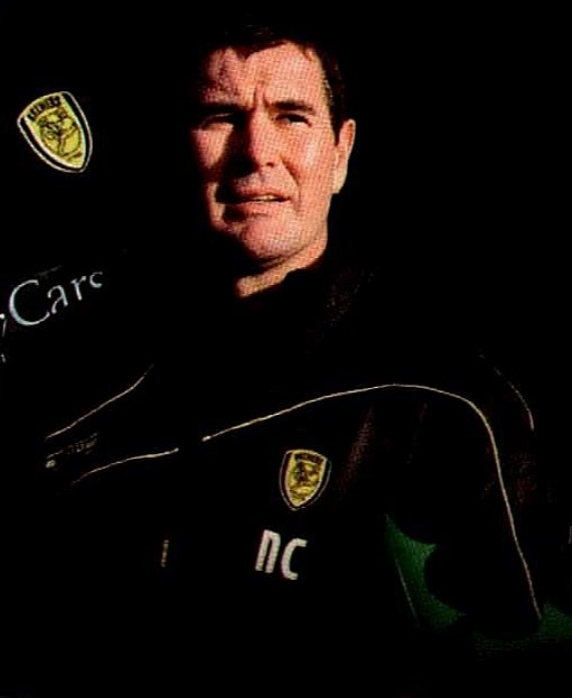
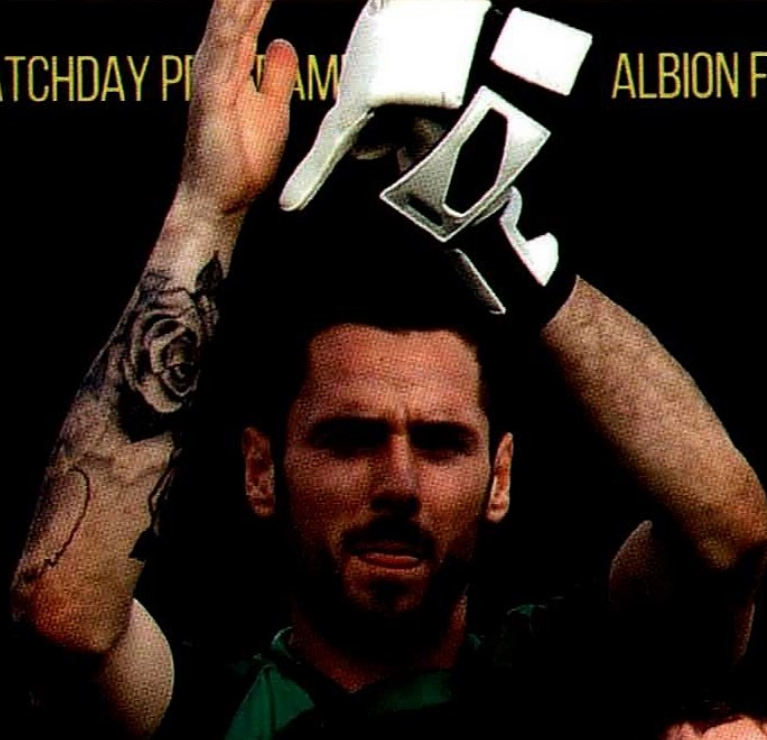


THE OFFICIAL MATCHDAY PROGRAM

ALBION FOOTBALL CLUB



THE MATCHDAY

BREWER

#BAFCANDPROUD

VS SWINDON TOWN | SKY BET LEAGUE ONE
28.12.15 | KICK-OFF 15:00 | ISSUE FOURTEEN | £3



Baytree Cars

PRESTIGE & PERFORMANCE



2010/59 Ferrari California 4 3 2dr
Miles: 14,000 **£104,900**



2011/11 Bentley Continental 6.0 GT 2dr
Miles: 9,574 **£82,900**



2012/12 Porsche Panamera 4 8 GTS 5dr
Miles: 17,229 **£68,900**



2013/13 Audi Q7 3.0 TDI S Line Plus
Tiptronic Quattro 5dr
Miles: 22,230 **£36,500**



2012/62 Range Rover Sport 3.0 TD HSE 4x4 5dr
Miles: 34,191 **£32,900**



2012/12 BMW X6 3.0 xDrive 30d
Blue Performance 4x4 5dr
Miles: 55,912 **£27,900**



2011/60 Audi TT 2.5 RS Roadster Quattro
2dr Miles: 29,724 **£27,500**



2011/11 BMW 530d M Sport Saloon 4dr
Miles: 46,794 **£21,500**



2012/62 Audi TT 2.0 TDI Black Edition
Quattro 3dr
Miles: 19,400 **£20,900**



2012/12 Mercedes-Benz CLS350 CDI Blue
EFFICIENCY Sport AMG 7G Tronic Plus 4dr
Miles: 76,998 **£21,500**



CONTENTS

04	Nigel Clough
07	Ben Robinson
09	John Mousinho
11	Brewers News
13	League One Roundup
16	Swindon Town
20	Action Replay
23	65 Years @ BAFC
25	This Year in Football
26	Feature Interview
31	Brewers Editorial
36	Action Replay
39	Top Tweets
41	Potsy's Pics
43	Outside Brewer
45	On This Day
46	Commercial News
51	View from the Gantry
52	Academy News
53	Jack Sharkey
55	Brewers in the Community
60	Junior Brewers
64	Fixtures & Results

Feature Interview: **REMI MATTHEWS** PAGE 26-28

CLUB ADDRESS

Burton Albion Football Club, Princess Way, Burton On Trent, Staffs, DE13 0AR

CLUB HISTORY

Formed: 1950

Honours (Winners):

Football League Two: 2014/15

Football Conference: 2008/09

Northern Premier League: 2001/02

Southern League Cup: 1963/64, 1996/97

1999/00

Northern Premier League Challenge Cup:

1982/83

Staffordshire Senior Cup: 1955/56

Birmingham Senior Cup: 1953/54, 1996/97

Bass Charity Vase: 1954, 1961, 1970/71, 1961,

1966, 1997, 2006, 2007, 2008, 2009, 2011, 2013

Top Goalscorer: Richie Barker - 159 Goals

1960/62, 1963/67

Most Appearances: Darron Stride - 646

CLUB DIRECTORY

Chairman: Ben Robinson

Directors: C.M. Brodie C. Simpson, P.A.

Brown, J.H. Williams, P.C. Simpson, R.A.

Brown, T. Clarke, F.E.L. Spiers & I. English

Company Secretary: Frank Spiers

Football Secretary: Fleur Robinson

Safety Officer: Paul Chapman

Home Shirt Sponsor: Baytree Cars

Away Shirt Sponsor: Anvil Hire Limited

Club Doctor: Dr A. Marshall

Crowd Doctor: Dr P. Robinson

Telephone: 01283 565938

Website: www.burtonalbionfc.co.uk

FOOTBALLING STAFF

Manager: Nigel Clough

Assistant Manager: Gary Crosby

First Team Coach: Andy Garner

Physiotherapist: Nick Fenton

Head of Youth: Mike Whitlow

Head of Community: Andy Taylor

THE MATCHDAY BREWER

Contributors: Ash Willis, Nigel Powlson

Ian Hawkins, Liam Staley, Keith Bloor

John Mousinho, Tony Bentley, Jack

Sharkey, Adam Smallman, Rob Slater

Reece Brown and Pete Bacon

Club Photographer: John Potts

Design: Pete Bacon - Full Circles

01158 409998 | pete@fullcircles.co.uk

Print: Rubicon Print

01246 454525 | dean@rubiconprintitd.co.uk

**The views in this programme are not necessarily the views of Burton Albion Football Club, the Designers, or the Printers. Material within this publication is copyrighted and may only be reproduced with the permission of Burton Albion Football Club*

FIND US ON





THE MANAGER

THERE ARE NO EASY GAMES IN LEAGUE ONE

HELLO EVERYONE AND WELCOME TO TODAY'S GAME, I WOULD LIKE TO WELCOME THE PLAYERS, OFFICIALS AND SUPPORTERS OF SWINDON FOR THE FIRST OF TWO HOME GAMES IN A ROW.

I hope you all had a good Christmas and are now looking forward to another important game for Burton Albion.

With Christmas deadlines for the programme, I'm writing these notes prior to the Bradford fixture and with the festive matches coming thick and fast there are a lot of points to be won in a short space of time.

There is no doubt that we have had a great first half to the season and we must now try to keep that going.

Being at the top of the league or thereabouts may well affect us in the second half of the season. We are aiming to stay up there over the Christmas period and it will be reflected in the way teams approach us and we are there to be shot at.

But it can work in the opposite direction. Gillingham were a bit wary of us. They are normally a team that runs at you, puts you under pressure, especially at home, and we turned the tables on them. So it can also work the other way.

It's not a fear factor, but when you are top of the league and playing with confidence, then other teams are aware of that.

There are no easy games in League One and we have to be ready and at our best for every match.

It's more about what we do than the opposition. If we are at home the onus is on us to go out and create and to be as positive as we were at Gillingham. If we can repeat that kind of performance we will be happy.

The players have worked incredibly hard and we have a good squad. That's important when you have so many games coming on top of each other.

It's our last match in 2015 and we now need to carry on what we have been doing for the last 12 months into 2016.

I hope you all have a good New Year and I look forward to welcoming you back on January 2 when we take on Blackpool.

Nigel Clough
First Team Manager



“
IT'S OUR LAST
MATCH
IN 2015
AND WE NOW NEED
TO CARRY ON WHAT
WE HAVE BEEN
DOING FOR THE LAST
12 MONTHS
”



Ben Robinson

FINANCIAL ADVISORS LTD

Independent Financial Advisors

• Worthington House • 146 High Street • DE14 1JE
BURTON ON TRENT :01283 564774

Email: ben.robinson@benrobinsonfa.co.uk

SEEING IS

BELIEVING

Representative Example New Ford Ka Edge
3dr Hatchback 1.2 69PS Petrol Manual

Monthly payments	48 x £99.00
On the road	£7,595.00
Customer deposit	£1,184.20
Deposit allowance**	£357.18
Amount of credit	£6,053.62
Total charge for credit† (inc. £10 purchase fee)	£1,162.38
Total amount payable	£8,767.38
Optional final payment	£2,454.00

6.8% APR Representative
4.7591% Fixed

The Ford Ka Edge

3 Door Hatchback 1.2 69PS

Save
£2,745*

Off Manufacturer's RRP: £10,340



For more information please visit www.tch.co.uk



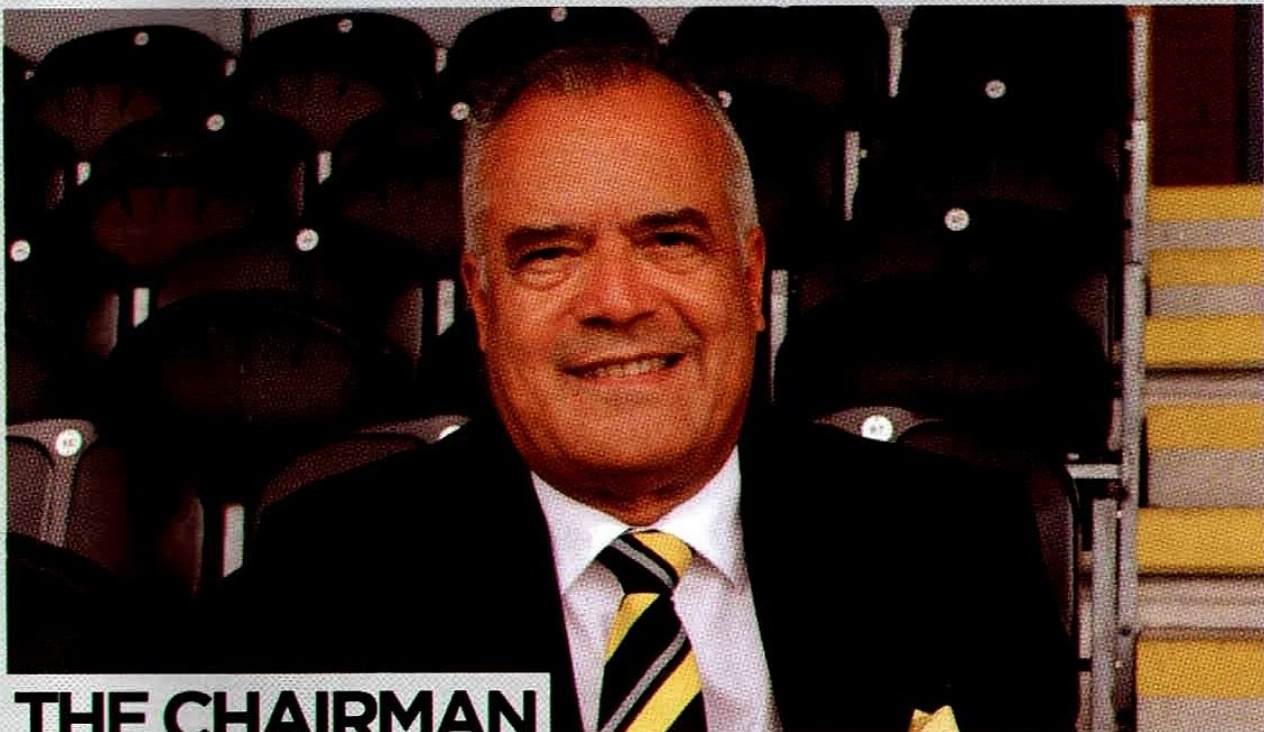
T.C. Harrison Ford
"There's no comparison"

01283 311 013

Horningslow Street, Burton On Trent, DE14 1NR



Official fuel consumption figures in mpg (l/100km) for Ford Ka 1.2 Petrol (69PS): urban 49.7 (5.8), extra urban 64.2 (4.4), combined 57.7 (4.9). Official CO2 emission 115g/km. The mpg figures quoted are sourced from official EU-regulated test results (EU Directive and Regulations 692/2008), are provided for comparability purposes and may not reflect your actual driving experience. *Saving of £2,745 calculated off Ford Manufacturer's recommended retail price of £10,340. Only available on Ford Ka Edge from Friday 18th - Sunday 20th December 2009. No cash alternative will be offered. **Deposit allowance only available when financed with Ford Credit. T.C. Harrison Group Limited, Mill Street, Bakewell, Derbyshire, DE45 1HH acts as a credit broker in relation to financial products and not a lender. We work with a number of carefully selected credit providers who may be able to offer you finance for your purchase. We are only able to offer finance products from these providers who may reward us for introducing you to them. †Purchase fee payable with Optional Final Payment if you wish to own the vehicle at the end of the agreement. Further charges may be made subject to the condition of the vehicle if the vehicle is returned at the end of the agreement. All figures include VAT unless indicated otherwise. Offers available to retail customers only. Finance example based on 6,000 miles per annum. Excess mileage charged at 6 pence per mile. Finance subject to status. Guarantees/indemnities may be required. Freeport Ford Credit. Excluding delivery charge. Cars shown for illustration purposes only and may feature optional extras that are additional costs. This offer supersedes all previously advertised manufacturers' promotions. Contact us for full details. T.C. Harrison Group Limited is authorised and regulated by the Financial Conduct Authority. Calls may be recorded for quality and training purposes.



THE CHAIRMAN

I HOPE YOU ALL HAD A VERY MERRY CHRISTMAS

TODAY I AM DELIGHTED TO WELCOME OUR VISITORS FROM SWINDON TOWN, THEIR DIRECTORS, PLAYERS, OFFICIALS AND TRAVELLING SUPPORTERS AND ALL TODAY'S SPONSORS AND GUESTS.

Happy Birthday to Ellie Bone, who is celebrating her 16th birthday, which fell on 27th December. She is joined today by close family and friends. Ellie has chosen to celebrate her birthday at the Pirelli Stadium and has been a fan going back to the Eton Park days. She is now a regular season ticket holder along with her younger brother Josh.

Today's Match sponsor and Man of the Match sponsor is Needwood Foods Ltd, represented by chairman John Williams and his daughter Fiona Bavester, the company managing director. Joining John and Fiona are their immediate family, with three generations of Brewers fans looking to enjoy a good match, obviously hoping for three points!

The company was formed by John in 1994, and is a key importer of dried fruit, and specialises in supplying the major UK retailers with private label products including sultanas, raisins, apricots and much more.

Our match ball is sponsored by Ian Barker Butchers from the nearby village of Rolleston on Dove and the company has now been established for some 50 years, providing top quality, traceable meats from local farms using traditional butchery methods.

All the animals are traditionally reared and slaughtered humanely and locally ensuring the meat is as fresh as possible and their beef is hung on the bone for 21 days. In addition, the bacon is home cured, cooked meats, sausages and

burgers are freshly prepared by hand on the premises and also they cook homemade pies daily. Ian Barker Butchers aims to provide their customers with a personal, individual service with a top quality product and they accept all major credit and debit cards in payment. The long-standing family business has recently seen son Andrew take over the running of the business from his father, Ian.

Our programme today is sponsored by Rubicon Print and Design - based in Chesterfield. The company has a new large format system which enables it to print large posters, pop-up stands and banners in addition to its general printing services. The company offers a wide range of services from graphic design and digital print through to a large run of commercial printing, multipage brochures and catalogues.

I would like to wish all our sponsors and supporters a very healthy, happy and prosperous New Year.

Ben Robinson
Chairman



Burton and
South Derbyshire UTC
A University Technical College



University
Technical
Colleges®

Do you dream of being a scientist or engineer?

Burton and South Derbyshire University Technical College (BSD UTC) will be the school for 14-18 year olds with a passion for science or engineering!

Anyone who is interested in **Science, Technology, Engineering and Maths** (STEM) subjects and is due to start Year 10 or Year 12 in September 2016, can find out more about the exciting new UTC at one of our Open Days!



Learn & Create
Investigate & Innovate

For more information, future open day dates and to register for fast track entry at our open days, visit www.bsduhc.co.uk/events.

Supported by





THE CAPTAIN

WE HAVE HAD A GREAT FIRST HALF TO THE SEASON

Hello everyone, welcome back to the Pirelli Stadium for the first of two important home games over the holiday period.

I hope you all had a great Christmas and are ready for a bit of football now.

I'm writing this before the Bradford game on Boxing Day, so forgive me for not referring to that match but concentrating on the next two games.

Home matches are vitally important if we are to keep the fine first half of the season going and your support is very important to the players. It's what helps give us that extra edge at home.

It's tough at this time of the year for players because we have to keep our minds on the matches and watch what we eat and drink.

That's part of the life of a professional footballer.

But you won't hear us moaning. Being a footballer is a privilege and being part of a successful team like Burton Albion is what we all want, so making a few sacrifices over Christmas is a small price to pay.

This squad has always trained and worked hard and that has been a key driver of our success, and we won't forget that.

It was after Christmas last year that some of our challengers fell away while we kept going.

HOME MATCHES ARE VITALLY IMPORTANT IF WE ARE TO KEEP THE FINE FIRST HALF OF THE SEASON GOING AND YOUR SUPPORT IS VERY IMPORTANT TO THE PLAYERS. IT'S WHAT HELPS GIVE US THAT EXTRA EDGE AT HOME.



Let's hope we can do that again this year.

If we can it's going to be a very exciting second half of the season.

Before I go, I should just say how much the players enjoyed visiting Queen's Hospital before Christmas and chatting with the patients and staff. It was great to see so many people backing Burton Albion and wanting us to do well.

Have a great New Year and I will see you back here for the Blackpool game.

John Mousinho
Captain



FOLLOW THE CAPTAIN ON TWITTER @jmous21



Training Services Ltd.

The Professional Approach

First Aid Courses

ABC Training Services provide a wide range quality training courses .



First Aid at Work, Requalification First Aid, Emergency First Aid at Work,
Paediatric First Aid, Automated External Defibrillation (other courses available)

Up to date Health & Safety training from the experts.

Risk Assessment, Manual Handling, General Safety Awareness, Fire Marshal, CIEF Level 2..

Forthcoming event? call ABC Event Cover dedicated professional team for peace of mind.

For all enquiries call **01283 845 008** or 07931 452386

Unit C2 Rear of Anglesey Business Centre, Anglesey Road, Burton DE14 3NT
1200 sq. ft. Air conditioned ground floor training room for hire. Call for details

HARDY SIGNS & DIGITAL

Professional Signage & Digital Display

Tel: 01283 569102
www.hardysigns.co.uk

FROM THE PIRELLI STADIUM

BREWERS NEWS



ALL THE LATEST NEWS FROM BURTON ALBION FOOTBALL CLUB

LATEST FAN ENGAGEMENT WAS A VERY POSITIVE EVENING AT THE PIRELLI STADIUM

THE latest fan engagement session took place on December 14 at the Pirelli Stadium

It was very positive evening focussing on the club's media activities.

Topics discussed included social media, the club website, the matchday programme, Brewers Player and the fans' survey

Fans filled in a brief opinion poll on the club's media activities and were invited to make comments and suggestions about how things can move forward.

The session was led by Nigel Powlson and Ash Willis from the Burton Albion media team and they are now sifting through the information gathered

The sessions are important in helping the club make changes going forward and offer the fans the chance to have a genuine input in club policy.

At the next fan engagement session we will report back on what changes have been implemented as a result.



PETERBOROUGH AWAY FIXTURE HAS A NEW DATE

BURTON Albion's League One visit to Peterborough will be played on Tuesday, January 26, at 7.45pm.

Albion were scheduled to have travelled to Peterborough on Saturday, January 9, but that can't take place as Graham Westley's side will be involved in the FA Cup Third Round.

Peterborough knocked the Brewers out of this season's FA Cup in the First Round and have since beaten Luton to continue in the competition.

They will take on Preston in the next round.



BREWERS TO BE LIVE ON SKY SPORTS

Burton Albion's Sky Bet League 1 fixture away at Southend has been selected for live coverage by Sky Sports.

The game was originally due to be played at Roots Hall on Saturday 20th February, kick-off 3.00pm. The rearranged date for this fixture is now Monday 22nd February, kick-off 7.45pm.

This will be the Brewers' second live fixture of the season after hosting Coventry City at the Pirelli Stadium in front of the cameras on 6th September.





**WE'RE
MAKING
FOOTBALL
LEAGUE
BETTING
BETTER**

sky

BET

MORE MARKETS

**ON YOUR TEAM THAN ANY
OTHER BOOKMAKER**

ARE YOU IN?

skybet.com/FL72

18+ only. Terms and conditions apply. More Markets refers to Outright Markets, comparison made using Oddschecker. For more information visit skybet.com/FL72. **GAMBLE RESPONSIBLY. FOR MORE INFORMATION VISIT WWW.GAMBLEAWARE.CO.UK**

LEAGUE ONE ROUNDUP



Issue Fourteen

By Ian Hawkins

A LOOK BACK AT THE UPS AND DOWNS IN LEAGUE ONE IN 2015

League One has certainly been an eventful competition over the last twelve months. Our visitors today ended up just ninety minutes away from taking the leap up to the Championship at the end of the last campaign.

Their supporters here today will need little reminder of the scoreline in the Wembley final that saw Preston North End take the final place in this season's Sky Bet Championship. The Lilywhites had been in pole position for promotion going into the final day of the season but a defeat in game 46 of the regular season saw them have to get promotion via the play-offs having suffered a disastrous record in the end of season lotteries in previous attempts. Bristol City and MK Dons were already celebrating promotion on the beach by the time Simon Grayson's side joined them.

Yeovil Town meanwhile, just twelve months after being relegated from the Championship, dropped through the relegation trap door once again and are now facing a fight to retain even their Football League status. For a club that entered the Football League just as Albion were entering the Conference (National League) it is sad to see them struggling as they are now but that season in the Championship seems to have taken a heavy toll on the Glovers.

Seven managers lost their jobs in the first half of 2015 before the final whistle was blown on the campaign. Yeovil changed the man at the helm twice in a desperate attempt to stay up but like Notts County, who sacked Shaun Derry with just over six weeks of the season left, the change at the top failed to have the desired effect.

Several of the sides who changed managers last season have changed again. Tony Humes took over from Joe Dunne at Colchester but left in the build up to the U's game here at the Pirelli Stadium and there was certainly no upturn in fortunes in the first game for the new manager as Albion went goal crazy giving us our biggest win of the season to date (at time of going to press). Oldham and Peterborough also changed managers last season and have done so again in the early stages of this season. When Lee

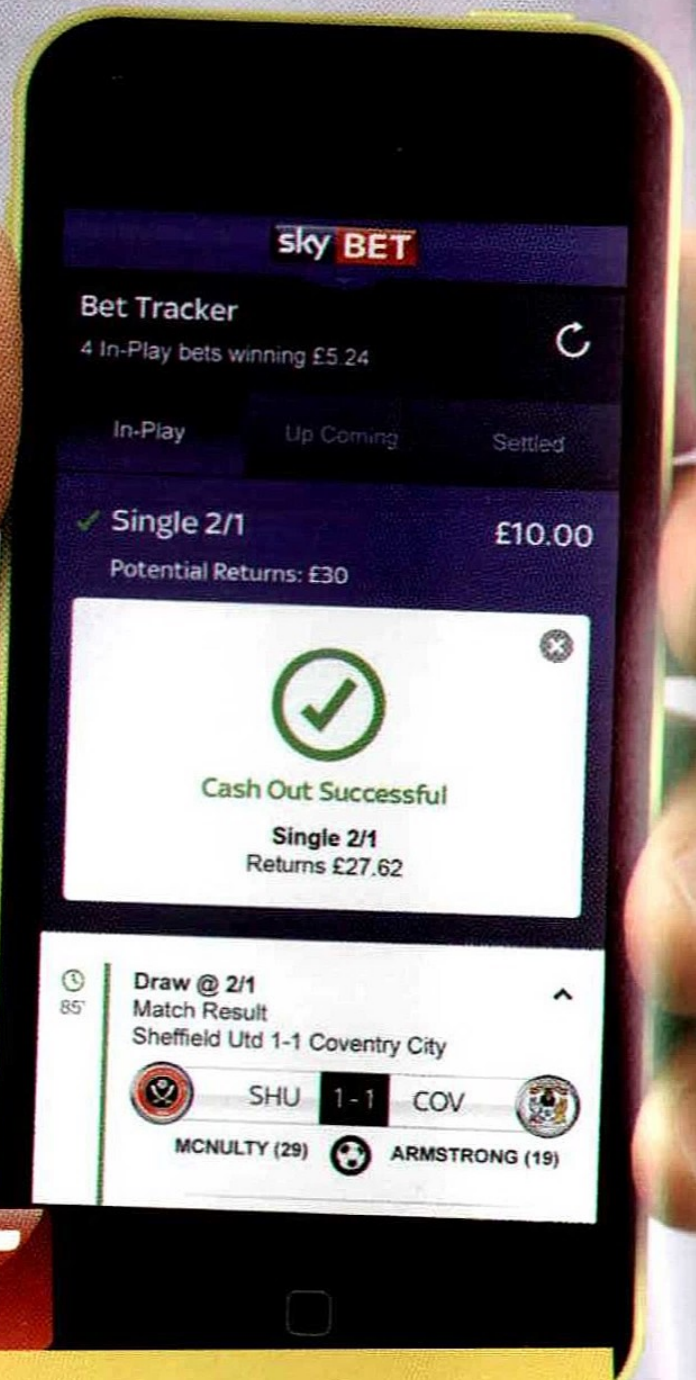
SEVEN MANAGERS LOST THEIR JOBS IN THE FIRST HALF OF 2015 BEFORE THE FINAL WHISTLE WAS BLOWN ON THE CAMPAIGN. YEOVIL CHANGED THE MAN AT THE HELM TWICE IN A DESPERATE ATTEMPT TO STAY UP BUT LIKE NOTTS COUNTY, WHO SACKED SHAUN DERRY WITH JUST OVER SIX WEEKS OF THE SEASON LEFT, THE CHANGE AT THE TOP FAILED TO HAVE THE DESIRED EFFECT.

Johnson left Oldham for Barnsley it was somewhat out of the blue that Darren Kelly was handed his first managerial job at Boundary Park but he lasted weeks before ex-Blackburn midfielder David Dunn took the reins. A difficult start has seen the Latics struggle for results, particularly at home and they face a battle for survival as we head into the new year.

Peterborough initially gave Head of Academy Dave Robertson their managerial job but he too failed to live up to expectations before Graham Westley took the job. Whatever you think of his managerial methods he has turned the Posh around after a poor start and certainly showed a big improvement as his new side put paid to Albion's FA Cup hopes earlier on this season.



WE'RE
MAKING
BETTING
LESS
MISSED OUT
MORE
CASHED OUT



sky BET

CASH OUT

BET STATUS, MATCH STATS
AND CASH OUT - ALL IN
ONE PLACE

ARE YOU IN?
skybet.com

4

The Robins finished fourth last season with a total of 79 points, they went on to lose 4 – 0 to Preston in the playoff final.



CLUBS BY NUMBERS

SWINDON TOWN FOOTBALL CLUB

800,000

The club paid a record £800,000 for Joey Beauchamp from West Ham in 1994.



15,728

The capacity of the County Ground where they have been since 1896. The addition of floodlights in 1951 cost £350.

1980

The year Chris Kamara won player of the year - "Unbelievable Jeff"

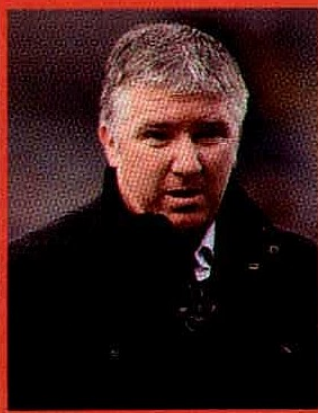


886

Appearances by John Trollope between 1960 and 1980, he managed the club from 1981 to 1983.

49

The age of manager Martin Ling, he made 150 appearances for the club as a player.



136

Swindon Town was formed 136 years ago by the Reverend W B Pitt, he was recorded as being the captain of Swindon Association Football Club in 1879. The club was renamed in 1883.



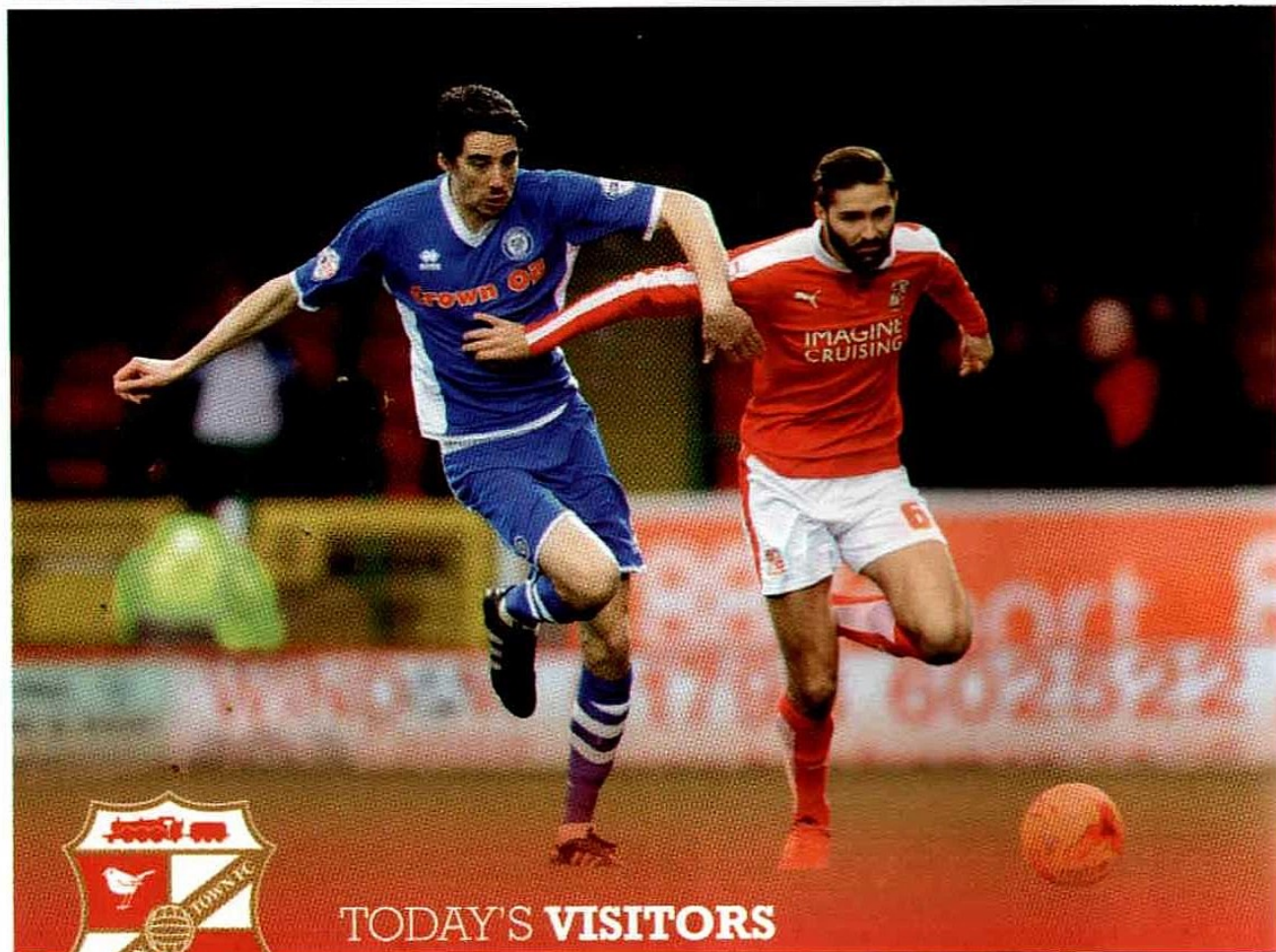
100

They were relegated from the Premiership at the end of 1993-94 after recording only five wins and conceding 100 goals — the record has yet to be broken.

48

Most goals scored in a season for the club by Harry Morris between 1926 and 1933, he was voted the club's best ever player

Words by Liam Staley



TODAY'S VISITORS

SWINDON TOWN FOOTBALL CLUB

SWINDON TOWN HAVE EXPERIENCED AN UPTURN IN FORM FOLLOWING MARTIN LING'S APPOINTMENT LAST MONTH.

The club were in the relegation places when Ling took charge but they have since managed to string together a run of wins, with striker Nicky Ajose scoring on a regular basis. The Robins began the campaign in strong fashion with a 4-1 opening day win over Bradford City and were defeated just once in their first six league games.

But a major slump saw Mark Cooper part company with the club as they failed to win any of their next eight games, losing seven of them. Club chairman Lee Power became caretaker manager whilst a replacement was sought but the Robins fell towards the foot of the table until Ling's arrival. It is a far cry from last season as the club reached the play-off final following a fourth place finish.

There have been a few highlights in the club's history including a memorable League Cup triumph in 1969 when they defeated Arsenal 3-1, with Don Rogers grabbing a brace in extra-time. The Robins have also enjoyed successes under high-profile managers with Glenn Hoddle leading the club to the Premier League in 1993 and Paulo Di Canio managing the team to the League Two title in 2012.



FACTFILE

Year Formed: 1879

Ground: County Ground

Capacity: 15,728

Chairman: Lee Power

Manager: Martin Ling

Last Season: 4th League One

Local Rivals: Bristol City, Bristol Rovers

CLUB HONOURS

English Second Tier

Play-Off Winners: 1989/90
1992/93

English Third Tier

Winners: 1995/96

English Fourth Tier

Winners: 1910/11, 2011/12

Football League Cup

Winners: 1968/69

CLUB RECORDS

Most Appearances all Competitions

John Trollope 1960/80 - 886

vs SWINDON TOWN

THE OFFICIAL MATCHDAY PROGRAMME OF BURTON ALBION FOOTBALL CLUB

YouTube Instagram Twitter Facebook

THE GROUND

THE COUNTY GROUND



The County Ground has been Swindon Town's home since 1896 and currently holds a capacity of 15,728 following its redevelopment into an all-seater stadium in the mid-nineties. A record attendance of 32,000 at the ground was set against Arsenal in the FA Cup Third Round in January 1972. A notable feature is a large Rolex clock in the Stratton Bank End, which is the only one in the world at a football stadium. The ground has also played host to a Women's International between England and Holland in 2007 along with a number of concerts.

BETWEEN THE STICKS

LAWRENCE VIGOUROUX

LAWRENCE VIGOUROUX IS CURRENTLY ON A SEASON-LONG LOAN WITH SWINDON FROM PREMIER LEAGUE SIDE LIVERPOOL AND HAS BEEN FIRST CHOICE BETWEEN THE STICKS MAKING OVER 20 APPEARANCES SO FAR.

The 22-year old began his career in the youth team at Brentford before joining the Tottenham Hotspur Academy, where he signed his first professional contract in 2013. He spent time on loan at Hyde United during the 2013-14 season, where he made 12 appearances in the National League and impressed despite the club's struggles during that campaign. He then went on trial at Liverpool and earned a permanent move to Anfield in the summer of 2014. He became a regular for Liverpool's U21 side and was rewarded for his progress by signing a new two-year deal in May. Vigouroux has also made appearances for Chile at youth International level and was

included in the squad for the U20 South American Youth Championships in 2013.



CLUB NEWS

SWINDON TOWN

STEWART MAKES RETURN FROM INJURY

KEVIN Stewart made a return to action in a development game against Bristol Rovers.

The on-loan Liverpool man had been sidelined since picking up an injury at Newport County in September.

Town won the game 3-2 with goals from Ellis Iandolo and a double from Jordan Stewart.

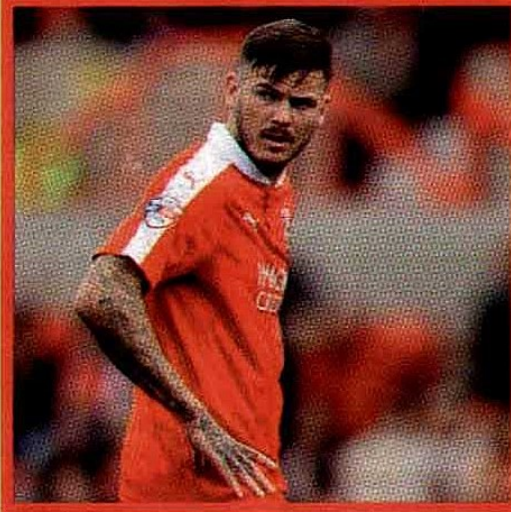


GLADWIN LOAN EXTENDED

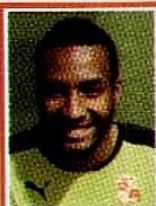
TOWN have agreed to extend Ben Gladwin's loan from Queen's Park Rangers until January 9th.

The midfielder, who departed SN1 in the summer, has been on loan with the club since October - a deal that was extended in early November.

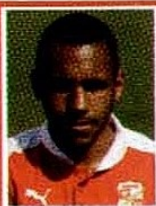
Gladwin has made several appearances for the Town so far this term, netting once in a 2-2 draw with Coventry City at the County Ground.



PLAYER PROFILES



01
L VIGOUROUX
Pos: **GOALKEEPER**
DOB: **19/11/93**
POB: **ENGLAND**



02
NATHAN THOMPSON
Pos: **DEFENDER**
DOB: **09/11/90**
POB: **CAMEROON**



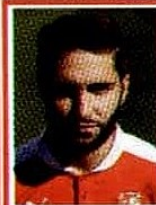
03
BORMONDE-OTTEWILL
Pos: **DEFENDER**
DOB: **21/12/95**
POB: **ENGLAND**



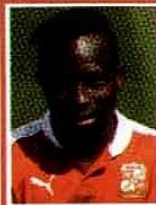
04
FABIEN ROBERT
Pos: **MIDFIELDER**
DOB: **06/01/89**
POB: **FRANCE**



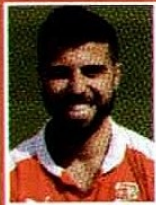
05
JORDAN WILLIAMS
Pos: **DEF/MID**
DOB: **06/11/95**
POB: **WALES**



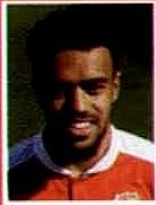
06
JORDAN TURNBULL
Pos: **DEFENDER**
DOB: **30/10/94**
POB: **ENGLAND**



07
DRISSA TRAORÉ
Pos: **MIDFIELDER**
DOB: **25/03/92**
POB: **IVORY COAST**



08
YASER KASIM
Pos: **MIDFIELDER**
DOB: **10/05/91**
POB: **IRAQ**



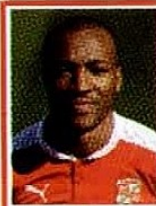
10
NICKY AJOOSE
Pos: **FORWARD**
DOB: **07/10/91**
POB: **ENGLAND**



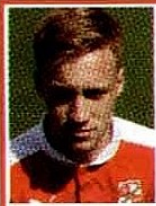
11
KEVIN STEWART
Pos: **DEFENDER**
DOB: **07/09/93**
POB: **ENGLAND**



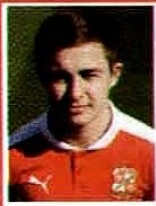
12
MOMAR BANGOURA
Pos: **MIDFIELDER**
DOB: **24/02/94**
POB: **SENEGAL**



14
WES THOMAS
Pos: **FORWARD**
DOB: **23/01/87**
POB: **ENGLAND**



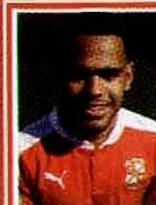
15
JAMES BROPHY
Pos: **DEFENDER**
DOB: -
POB: **ENGLAND**



16
JORDAN STEWART
Pos: **MID/FOR**
DOB: **31/03/95**
POB: **N IRELAND**



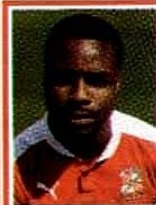
17
BEN GLADWIN
Pos: **MIDFIELDER**
DOB: **08/06/92**
POB: **ENGLAND**



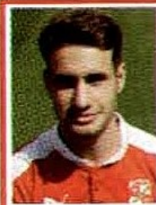
18
LOUIS THOMPSON
Pos: **MIDFIELDER**
DOB: **19/12/94**
POB: **ENGLAND**



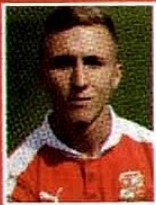
19
JEREMY BALMY
Pos: **FORWARD**
DOB: **19/04/94**
POB: **FRANCE**



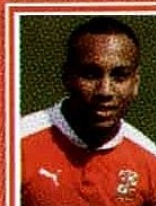
20
JONATHAN OBIKA
Pos: **FORWARD**
DOB: **12/09/90**
POB: **ENGLAND**



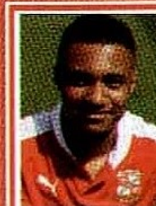
21
WILL RANDALL
Pos: **MIDFIELDER**
DOB: **02/05/97**
POB: **ENGLAND**



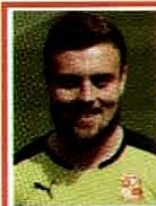
22
LEE MARSHALL
Pos: **MIDFIELDER**
DOB: **21/11/96**
POB: **ENGLAND**



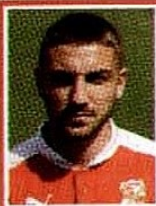
23
JOSH COOK
Pos: **FORWARD**
DOB: -
POB: **ENGLAND**



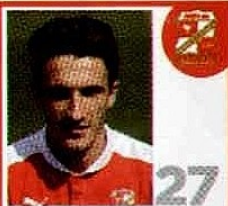
24
JERMAINE HYLTON
Pos: **FORWARD**
DOB: **28/06/93**
POB: **ENGLAND**



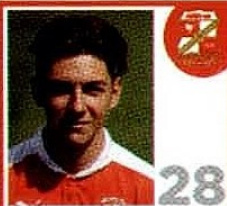
25
TYRELL BELFORD
Pos: **GOALKEEPER**
DOB: **06/05/94**
POB: **ENGLAND**



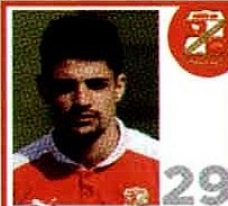
26
ANTON RODGERS
Pos: **MIDFIELDER**
DOB: **26/01/93**
POB: **ENGLAND**



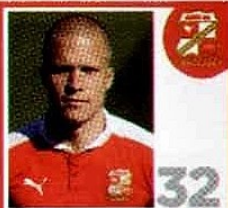
BRAD BARRY
Pos: **DEFENDER**
DOB: **13/02/95**
POB: **ENGLAND**



ELLIS IANDOLO
Pos: **MID/FOR**
DOB: **22/08/97**
POB: **ENGLAND**



R ROSSI BRANCO
Pos: **DEFENDER**
DOB: **25/07/90**
POB: **BRAZIL**



HENRIK OJAMAA
Pos: **FORWARD**
DOB: **20/05/91**
POB: **ESTONIA**



ADAM EL-ABD
Pos: **DEFENDER**
DOB: **11/09/84**
POB: **ENGLAND**



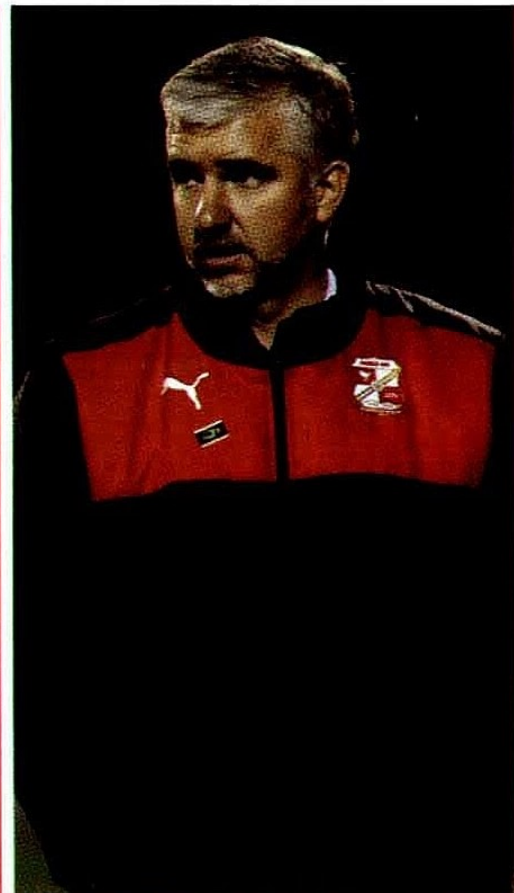
JAMIE CALVIN
Pos: **FORWARD**
DOB: **08/10/95**
POB: **ENGLAND**

STAR PLAYER

BEN GLADWIN

BEN GLADWIN MADE A WELCOME RETURN TO SWINDON IN OCTOBER, AFTER DEPARTING THE CLUB TO JOIN QPR IN THE SUMMER FOR AN UNDISCLOSED FEE.

The 23-year old has rejoined on loan and played his part in reviving the Robins form, recently scoring a 30-yard strike in their win against Rochdale. After featuring for various non-league clubs including Salisbury City and Hayes & Yeading, Gladwin signed for Swindon from Marlow in November 2013. Last season the midfielder scored 11 goals, including eight in the final six games to help the Robins reach the play-off final.



THE GAFFER

MARTIN LING

A previous player for the Robins during the nineties, Martin Ling was appointed as the club's new manager last month following Mark Cooper's departure, signing a two-and-a-half-year deal. Ling began his managerial career with Leyton Orient in 2003, a club he had also previously played for. He guided the O's to automatic promotion from League Two in 2006 and managed to keep them up in the following campaign. He left the O's by mutual consent in January 2009 after six years in charge. Following a spell with Cambridge United, Ling was hired as Torquay United's manager in June 2011 and steered the Gulls to the play-offs in his first season, losing out to Cheltenham Town in the semi-finals.

MANAGER FACTFILE

Born: 15 July 1966

Place of birth: West Ham, London

Teams Managed:

2003-2009 - Leyton Orient

2009-2011 - Cambridge United

2011-2013 - Torquay United

2015 - Present - Swindon Town



TUESDAY 1ST DECEMBER | PIRELLI STADIUM | KO:19:45
PHOTOGRAPHY BY JOHN POTTS

BURTON ALBION 2 MILLWALL 1

Burton went two points clear at the top of Sky Bet League 1 after a tense 2-1 home win over Millwall.

Damien McCrory and Nasser El Khayati fired the hosts into a half-time lead but it was the Londoners who dominated the second half.

Joe Martin reduced the deficit but the defender's goal was not enough and the Lions finished a feisty encounter with 10 men after the dismissal of defender Mark Beevers.

The game burst into life with two dazzling Burton goals in a three-minute spell.

For full match report visit www.burtonalbionfc.co.uk

THE TEAMS

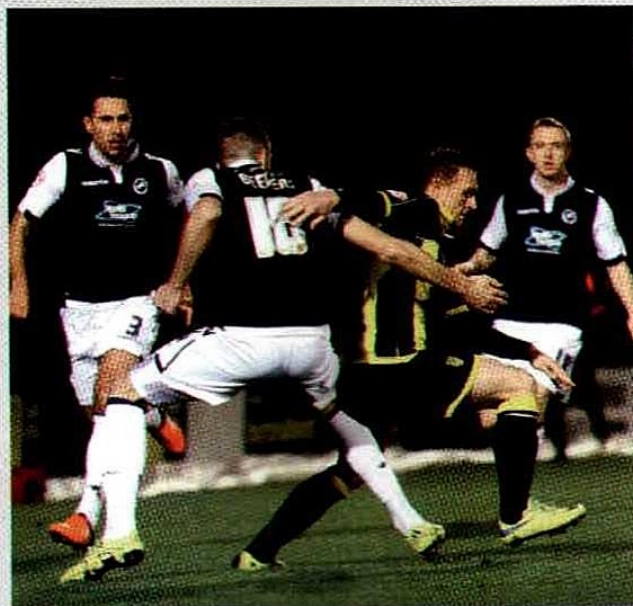
Burton Albion (4-4-2):

1 McLaughlin, 2 Edwards, 4 Mousinho, 30 Flanagan
14 McCrory, 15 Naylor, 19 O'Connor, 12 Butcher, 11 El Khayati
21 Duffy, 9 Beavon

Subs: 7 Reilly, 10 Akins, 13 Joachim, 20 Thiele, 22 Binnom-Williams, 23 Palmer, 31 Matthews

Millwall (4-4-2):

13 Archer, 2 Cummings, 15 Nelson, 16 Beevers, 3 Martin
10 Onyedina, 6 Williams, 21 Saville, 18 Ferguson
20 Morison, 22 O'Brien **Subs:** 1 Forde, 4 Edwards, 8 Upson,
9 Gregory, 11 Martin, 24 Thompson, 36 Wood



TALE OF THE TAPE



48%	POSSESSION	52%
8	TOTAL SHOTS	9
4	SHOTS ON TARGET	3
6	CORNERS	7
14	FOLLS	13



LOSING CONTROL

Managing your credit can be stressful or stress-free.

The difference is our personalised text and email alerts to help you make payments on time.

The difference is how great it feels to be in control.

The difference is Capital One
capitalone.co.uk

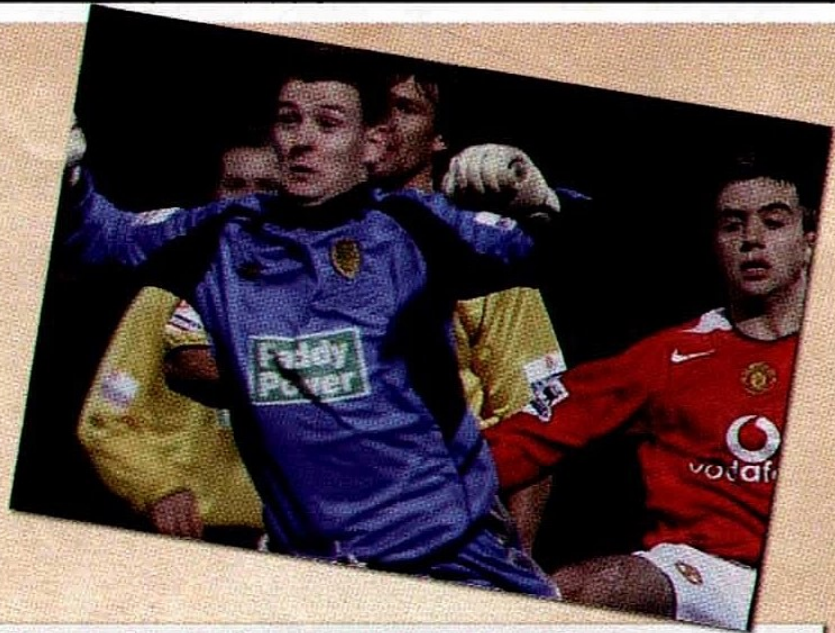
34.9% APR representative variable

*A registered mark of Capital One (Europe) plc. Registered Office: Trent House, Station Street, Nottingham, NG2 3HX.
Registered in England and Wales. Company Number: 3879023. Authorised and Regulated by the Financial Conduct Authority.



65 YEARS OF BURTON ALBION FOOTBALL CLUB

THIS YEAR BURTON ALBION IS CELEBRATING 65 YEARS AS A FOOTBALL CLUB AFTER BEING OFFICIALLY FOUNDED AT A TOWN HALL MEETING IN JULY 1950. TO CELEBRATE THIS LANDMARK WE ARE SELECTING 65 GREAT MEMORIES FROM THE CLUB'S HISTORY.



MANCHESTER UNITED VS BURTON ALBION - THE REPLAY

BY GEORGE BIRCH

AFTER HOLDING MANCHESTER UNITED TO A 0-0 DRAW IN THE FA CUP THIRD ROUND IN 2006, THE BREWERS WERE NOW GIVEN THE CHANCE TO PLAY AT OLD TRAFFORD IN FRONT OF THE BIGGEST CROWD THEY'D EVER PLAYED IN FRONT OF.

Burton Albion fans were given a day to remember having watched their team manage to put in a stellar performance to earn them a goalless draw, and a replay at Old Trafford.

There was no holding back, 11,000 fans travelled to watch the Conference side in action at one of the biggest venues in world football, the biggest travelling contingent ever at Man United, and there was a real buzz going in to the game.

Media outlets had already called Albion the 'team of the tournament', despite the fact it was still only the third round.

The Red Devils were forced to field a much stronger squad than they did at the Pirelli Stadium. It would have to be even better from the Brewers, they would need to produce their best performance if they were to knock United out at their own ground.

The whistle blew and the wait was over, could they hang on for another 90 minutes? It wasn't to be, Saha converted the first goal within 7 minutes before Guiseppe Rossi headed home after 22 minutes to double the lead.

It wasn't a fair reflection, Burton had started the game well, they'd kept tight, passed the ball well but Manchester United had capitalised on the few chances they were given early on.

Even at two goals down the Brewers never looked out of place, they won back the ball well and were comfortable in

midfield, yet rarely threatened the goal. They ended the first half still struggling to find a way through United's defence and went in to the second half still two goals down.

It didn't take long for the home side to make it three though, with keeper Saul Deeney left shell shocked when Richardson rifled a shot past him.

Substitute Giggs then made it four, before Burton who were still attempting to revive the game, conceded a fifth when Rossi grabbed his second goal.

It may have been a big defeat, but nothing can take away from the fact that the Red Devils were forced to play their best because of the relentless energy and hard work from all the players at Burton Albion.

Some may have seen the loss as a disappointment, but not a lot of people would have believed you if you said that Burton Albion took the then eight times Premier League winners to an FA Cup Third Round replay, despite more than 100 positions between the two sides.

If you would like to suggest a great memory – a player, a game, a key event – then email nigel.powison@burtonalbionfc.co.uk or tweet [@Burtonalbionfc.co.uk](https://twitter.com/Burtonalbionfc)

Couplings
Drawbars
A-Frames

Jockeys
Propstand
Brackets

Chassis

Axles
Brakes
Cables

Mudguards
Wheels &
Tyres
Lighting

**Leaders in
trailer & brake
technology
manufacture
& supply**



Tel: 01283 531541

Web: www.knottuk.com

Webshop: www.knott-trailer.co.uk

KNOTT
GROUP



Roger Wetherill Vehicle Sourcing Ltd

Specialising in all Prestige Brands

We source cars for trade & retail clients

rogerwetherill.vehiclesourcing@gmail.com

07860 251435

rw02buy@gmail.com

We buy all makes of cars from private & trade



THIS YEAR IN FOOTBALL

2015 will certainly go down as a year to remember in this particular part of the footballing world. As calendars went up at the start of the year then I doubt that most of a Burton Albion persuasion would have dreamt that it would end with our beloved Brewers pushing on at the top end of League One. A lot has happened over the last twelve months, not just here but throughout the footballing world.

Burton helped to complete something of a symmetry about the various league champions (Premier League apart) with all teams finishing top of their respective piles starting with the letter 'B'. Cut me some editorial slack with Bournemouth and ignore the AFC prefix and focus more on the remarkable rise of a club from League 2 in Albion's first season in the league to Premier League members just six years later and playing some fabulous football along the way. Over recent years we have developed something of an affinity with the Cherries so they deservedly get congratulations from everyone here at the Pirelli Stadium on an excellent twelve months and recent victories over both Chelsea and Manchester United will certainly give them confidence that they can extend their stay in the top flight beyond one season.

Another Burton Albion connection links us to last season's League 1 champions. Former Brewers striker Steve Cotterill took over the managerial reins at Bristol City with the Ashton Gate club struggling in the division but last season saw a real transformation as they took on all comers and justifiably claimed the League One crown. They have found it difficult to adapt to the Championship after a few years away but in Cotterill they have a man who if given the time will, I am sure, get them going in the right direction. Bristol is a big city to not have a successful football club, although perhaps they suffer from having two sides to split loyalties in the city. Even

the blue half of Bristol were celebrating in May as they bounced back to the Football League after a twelve month stay in the National League. Not many sides have achieved an immediate return so the Pirates achievement is worthy of mention. They couldn't finish above Martin Allen's Barnet who claimed the National League crown. One of the funniest sights I saw at the end of last season was the sight of Southend fans who had left their playoff final early desperately running back up Wembley Way to try and get back into the Stadium for what proved to be a dramatic winning end to a season that looked with seconds to go as if it was going to be Wycombe's year. Priceless.....and a salutary lesson to all fans who decide to leave games early.....it's aint over till it's over!

There were plenty of games involving Burton last season that went to the wire. You only have to think back to that glorious day at Cambridge to know that. Ah such great memories. Here's hoping 2016 lives up to the last twelve months.

Come On You Brewers!

BY ASH WILLIS

REMI MATTHEWS

WE WANT TO KEEP PUSHING ON

REMI MATTHEWS IS CURRENTLY ON HIS SECOND SPELL WITH BURTON ALBION AFTER HE SPENT A SHORT TIME ON LOAN LAST SEASON WITHOUT MAKING AN APPEARANCE.

Matthews made history, in a way, as he started Burton Albion's first ever game in Sky Bet League One in which the Brewers ran out 2-1 winners on the day with goals from Stuart Beavon and Lucas Akins.

"It was a good experience for me really, making my league debut," said Matthews.

"To get the win as well was a positive.

"I didn't have much to do but what I did, I did well.

"I was happy to get my debut and play in League One really."

So far this season the on-loan stopper from Norwich has made six appearances for the Brewers, two of which were against Championship giants Middlesbrough and Bolton respectively in the Capital One Cup.

Remi said: "It was a really good experience for me.

"We beat Bolton 1-0 away at their place and we took Middlesbrough into extra time which was a positive.

"We didn't win that game but we put up a good battle and we were unlucky in the end and it was definitely a good experience to play in those games.

"It was a pity we didn't win the second round."

The Brewers took the lead against Middlesbrough in the Capital One Cup through a George Friend own goal. Boro did fight back however with a goal from Christian Stuani 20 minutes from time which gave them a lifeline as it forced extra time.

Four minutes into the second half of extra time, that man again Stuani popped up with the winning goal to knock the Brewers out of the Capital One Cup.

Remi said: "I think we were unlucky to not get something out of it.

"At the end of the day one team has to lose and if you look at the possession, they may have been the better team but we held out for quite a while.

"They got a lucky goal then they brought Downing on who changed the game."

With the Brewers sitting top of Sky Bet League One at the time of going to print, it may have been a surprise to a few people seeing as the Staffordshire club have only just been promoted from League Two.

The work that Jimmy Floyd Hasselbaink did to get the Brewers where they are today hasn't gone unnoticed and the new boss Nigel Clough admits he won't be changing much which the Albion players have recognised.

"It's good to be part of a League One team who are fighting for promotion," said Remi.

"Maybe we didn't expect to be doing so well at such an early stage but the lads have been excellent.

"You have seen the work ethic and how well the lads work under the old gaffer and even now the new gaffer has come in, not a lot has changed.

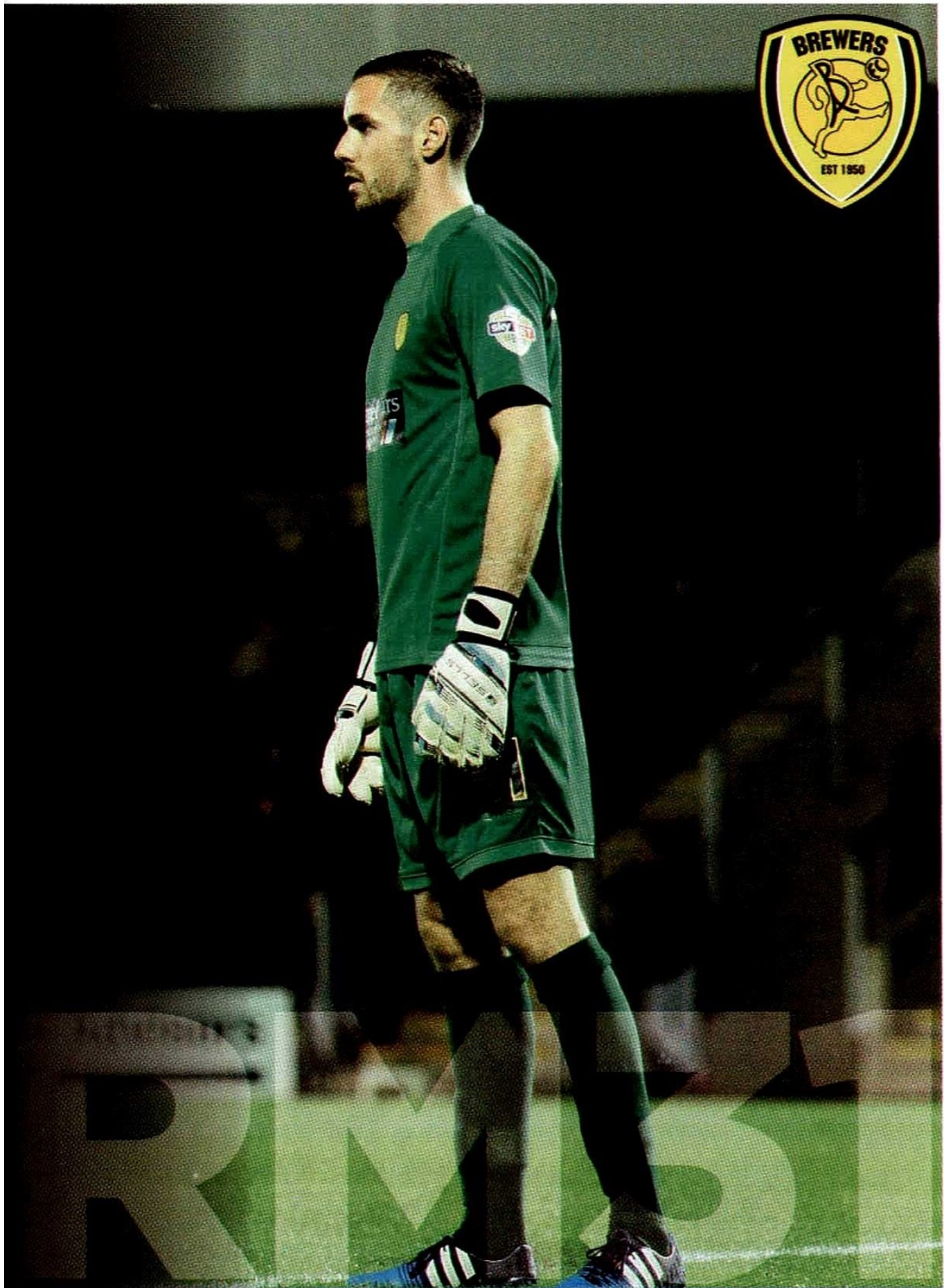
"THE LADS ARE WORKING EVEN HARDER BECAUSE THEY WANT TO STAY AT THE TOP OF THE TABLE.

"THEY ARE A GOOD BUNCH OF LADS AND WE WANT TO KEEP PUSHING ON."

At the time of going to print, Burton Albion have only conceded 16 goals in the league so far this season, proving that they have the best defensive record. Only six goals have been conceded at home but that is down to the whole team says Remi.

It has been proven this season that defending hasn't been down to the back four or back five, it has been throughout the whole squad with Stuart Beavon working as hard as ever at the top.

Looking back on a couple of games now, the Albion defence have been kept very quiet due to the old tactic 'defend from the front'.





REMI SAID: "CREDIT TO THE DEFENCE, EVEN WHEN I HAVE PLAYED IN THE GAMES I HAVE, THE DEFENCE HAS BEEN EXCELLENT BUT NOT ONLY THAT, IT STARTS FROM THE STRIKERS."

"It starts from Bev (Stuart Beavon) and Timmy (Thiele) then works its way down but the back four including Jon (McLaughlin) have been excellent this season.

"Jon has made important saves when needed, so it's positive from the lads and let's hope it carries on."

Remi is on loan from Norwich and has been unlucky to only be used as back up from Jon McLaughlin during his time at Burton Albion so far.

He has been lucky enough to work with the likes of England international John Ruddy who has made over 180 appearances for Norwich City since 2010. He has also won a cap for England coming on at half time in a 2-1 win against Switzerland back in 2012 keeping a clean sheet on his part.

Ruddy was fantastic during the 2011-12 season which led to him winning Norwich City's Player Of The Year at the end of the season.

"It's massive to have worked with him for five years now," said Remi.

"He is a great keeper, a true professional and a great guy."

"John is a very good goalkeeper and I have learned a lot from him."

"If I need any advice I can go straight to John or even my goalkeeper coach back there Dean Kiely."

City have most recently given senior starts to 24-year-old Declan Rudd who has been at the club since 1999. He enjoyed two separate loan spells at Preston North End accumulating over 60 appearances for the now Championship club.

Rudd has made a total of five appearances for Norwich this season, two of those in the league which have come in recent weeks after stepping in for the injured Ruddy.

Remi said, "You have even got the likes of Declan Rudd who is pushing through now."

"He has been there for a number of years and now he is getting into the first team starting 11."

**UP NEXT
IN ISSUE 15**

OF THE MATCHDAY BREWER

**TOM
NAYLOR**

**IF I NEED ANY
ADVICE I CAN
GO STRAIGHT
TO JOHN OR
EVEN MY
GOALKEEPER
COACH BACK
THERE DEAN
KIELY.**



THE WORKOUT

WWW.THE-WORKOUT.CO.UK

- Personal Trainers
- Spin Studio
- Cardio Theatre
- Sports Therapy
- Lounge Area
- Weights Studio
- Steam & Sauna Rooms
- Sunbed
- Beauty Therapy

MEMBERSHIPS FROM £22.95

WETMORE ROAD • BURTON ON TRENT • DE14 1SP

Charity No: 1279304
Company No: 0879325



**YEARS OF TRANSFORMING
GRASSROOTS FOOTBALL**



@FootballFoundtn

Youtube.com/Footballfdn

flickr.com/footballfoundation

linkedIn.com/football-foundation

www.footballfoundation.org.uk



BESPOKE TEAMWEAR SPECIALISTS

**Your team wear requirements
in safe hands**

**suppliers to the Brewers
for over 20 years**

Tel: 01283 531 855

email: sales@tagleisure.co.uk

Web: www.tagssportswear.co.uk



Solus Coaches welcomes you to give them a ring with your transport requirements, as a dedicated team, we are building a new modern, reliable and desirable fleet of vehicles for the people of our area to use and benefit from

WE WANT TO TAKE PEOPLE PLACES.....

**PROUD PROVIDERS OF BURTON ALBION
SUPPORTERS' AWAY TRAVEL**

Contact us on 01827 51736



**GET YOUR NEW HOME KIT
FROM JUST £22.50
ADD CHAMPIONS DECALS
+ NAME FOR JUST £15!**



BREWERS EDITORIAL

BY: NIGEL POWLSON

ONE OF THE SOMETIMES FORGOTTEN ADVANTAGES OF HAVING A FOOTBALL LEAGUE CLUB IN THE TOWN IS THE COMMUNITY BENEFITS FOR BURTON.

Part of this is the extensive programme of player appearances and activities during a season.

This involves everything from coaching youngsters at holiday football courses to joining forces with Pirelli to promote tyre safety.

This season we have forged links with the Muslim community in Burton with Nasser El Khayati leading a visit to a mosque, attended numerous schools and Jimmy Floyd Hasselbaink turned on the Christmas lights in Burton town centre.

The former manager also opened a new block at John Taylor, while Stuart Beavon and Remi Matthews attended the Junior Brewers Christmas Party, with Anthony O'Connor doing a Q&A at the Golden Goals festive meal.

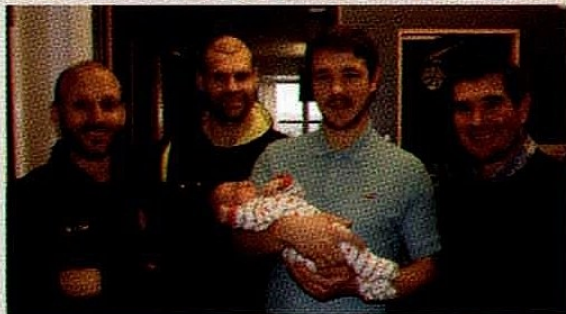


EDITORIAL

The entire first team squad, led by manager Nigel Clough, also visited Queen's Hospital and met staff and patients. You can read about the joy it brought to one little boy on the community page. Here we have a selection of pictures from that visit.

It's just one of many ways Burton Albion has had an impact far wider than just on football fans in 2015.

That's something that will continue to be important as we head into the new year



Images courtesy of Nigel Powlson and John Potts



Servicing from only
£49.50

Quote "MFFBrewers"



Win a Free Service
on Facebook



Call us: **0845 330 3126**
www.milfordfastfit.co.uk

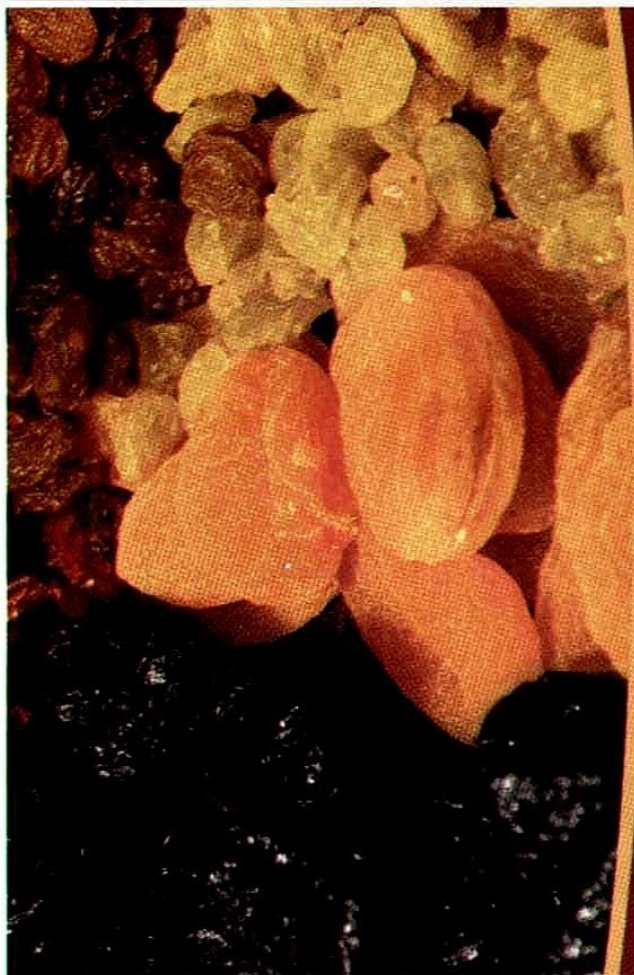


Close Brothers
Asset Finance

Providing finance to help spread the cost of purchasing new vehicles or release working capital from your current fleet and equipment.

Our experience throughout the industry ensures our clients enjoy the highest levels of service and commitment.

01283 808243
www.closeassetfinance.co.uk



*Specialising in
the supply of
private label
dried fruit*



NEEDWOOD FOODS
LIMITED

Tel: (+44) 01283 845545
Fax: (+44) 01283 845548

enquiries@needwoodfoods.co.uk
www.needwoodfoods.co.uk

IT'S
IMPOSSIBLE

Managing your credit can be stressful or stress-free.

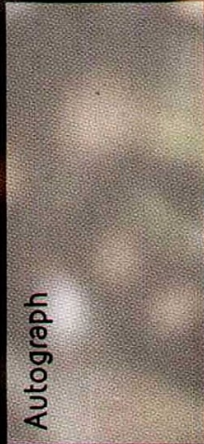
The difference is our personalised text and email alerts to help you make payments on time.

The difference is how great it feels to be in control.

The difference is Capital One
capitalone.co.uk

34.9% APR representative variable

®A registered mark of Capital One (Europe) plc. Registered Office: Trent House, Station Street, Nottingham, NG2 3HX.
Registered in England and Wales. Company Number: 3879023. Authorised and Regulated by the Financial Conduct Authority.



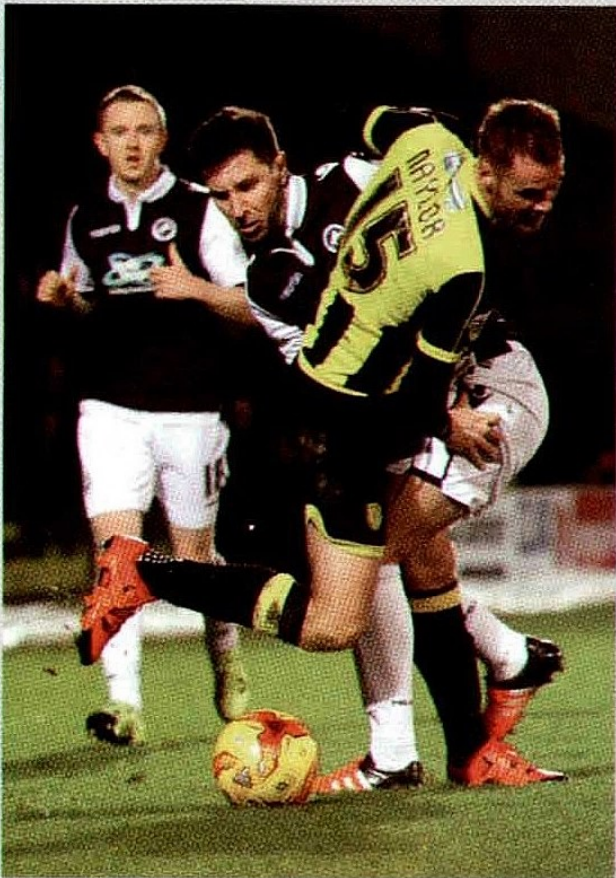
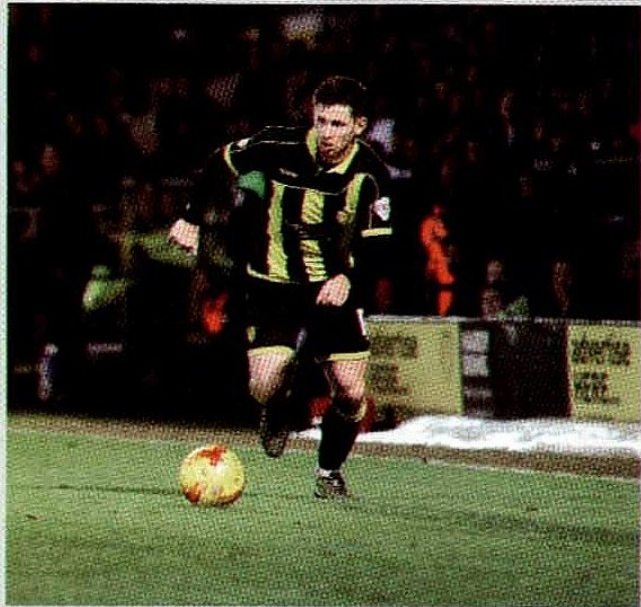
REMI MATTHEWS

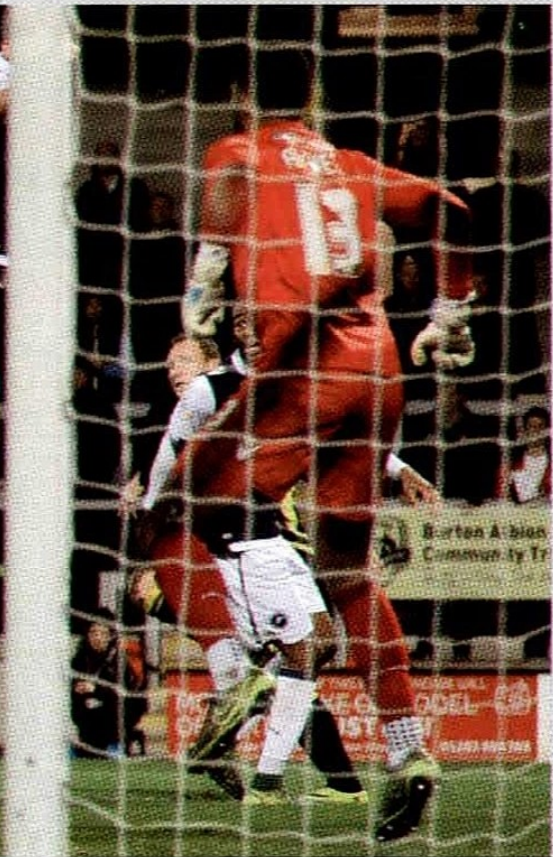


TUESDAY 1ST DECEMBER | PIRELLI STADIUM | KO: 19:45
PHOTOGRAPHY BY JOHN POTTS

BURTON ALBION MILLWALL

2
1







Trying to find a

TOP QUALITY PRINTERS

with the right prices?



LOVE PRINT?
YES, YES WE DO

Then get in touch today!

**BUSINESS CARDS, LETTERHEADS, COMPLIMENT SLIPS,
BROCHURES, LEAFLETS, FLYERS, CATALOGUES,
STICKERS, POSTERS, BANNERS, CANVASES**
and a whole lot more!

GET IN TOUCH TODAY TO SEE
WHAT WE CAN DO FOR YOU

T: 01246 454 525

E: reception@rubiconprintltd.co.uk



RUBICON
PRINT & DESIGN

WWW.RUBICONPRINTANDDESIGN.CO.UK

FIND US ON  



BREWERS TOP TWEETS OF THE YEAR



JANUARY

HERE IS @T99FTY CELEBRATING HIS GOAL WHICH HE DEDICATED TO A FRIEND RICHARD MAYNE WHO LOST HIS LIFE ON #MH17



FEBRUARY

LEE BELL HAS JOINED MACCLESFIELD TOWN ON LOAN UNTIL THE END OF THE SEASON. MORE TO FOLLOW...#DEADLINEDAY

MARCH

@SOCCERAM ARE CURRENTLY FILMING FOR 'SIMPLY THE CREST' WATCH OUT FOR THEM IN THE TOWN CENTRE!

APRIL

#BAFCANDPROMOTED



SOCCER **AM**

MAY

HAVE YOU SEEN THE @SOCCERAM 'SIMPLY THE CREST' FEATURE YET?

JUNE

BREAKING: BURTON ALBION HAVE SIGNED @CALLUMREILLY3_8

FOLLOW US ON



Burton-Albion-FC



@burtonalbionfc



@officialburtonalbion



BrewersOfficial

DONT FORGET, IF YOU'RE TRAVELLING TO AN AWAY GAME #GoTheBAFCDistance OR COMING TO THE PIRELLI STADIUM THIS SEASON #BAFCandProud USE THE HASH TAGS FOR THE CHANCE TO FEATURE IN THE MATCHDAY BREWER

LOYAL SUPPORTERS!



Source: JIAB May 2015

31,267 people read the
BurtonMail
and BurtonMail.co.uk every day.

Would you like to reach this dedicated local audience?

Call 01283 244422

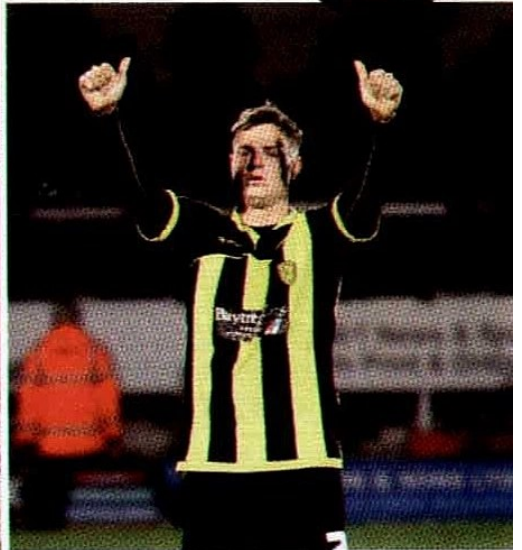
BurtonMail
Backing the Brewers





POTTSY'S PICS

Club photographer John Potts selects his favourite images from the Brewers recent games



GOOD LUCK

...to the Brewers in the 2015/16 season in League one!



®

Get the right team...
in *your* corner.

 @Smithpship #BAFCandProud

Contact Us: 01283 742 020

Offices in Burton, Derby, Leicester, Stoke and Swadlincote.

www.smithpartnership.co.uk



SMITH PARTNERSHIP

Solicitors



ASHLEY WILKINSON
OUTSIDE

BREWER

Ashley Wilkinson

Sports Journalist

Burton Mail

[@AshWilkinsonBM](#)

Burton Mail

BURTON ALBION'S MAIN FOCUS MAY NOT BE THE BIRMINGHAM SENIOR CUP – BUT THEIR MOST RECENT VICTORY IN THE COMPETITION DEMONSTRATES ONE OF THE KEY STRENGTHS OF THIS SQUAD.

Hoping to see more from some players on the fringes of the first team, Nigel Clough was in attendance as the Brewers named a strong line-up to take on the Southern Premier League Premier Division side nearly three weeks ago.

Matt Palmer, Jerome Binnom-Williams, Aurelien Joachim, Shane Cansdell-Sherriff, Anthony O'Connor and Callum Reilly all started the match.

Those six had, at the time, 79 first team appearances between them this season, with Binnom-Williams leading the way on 19.

All six are fighting for starting places, and have done since. While Cansdell-Sherriff used the hour he played to build up his match fitness, having been out with a groin injury during the preceding month, the bulk were trying to catch Clough's eye and he cannot have helped being impressed with the performance.

Though Bedworth did not name a full-strength first XI for the tie, all six first team battlers got a good run-out, with Binnom-Williams, Palmer and Joachim all getting on the scoresheet in a 6-0 victory.

But the more complete line-up was the most interesting one.

Albion named five youngsters – Nathan Ferguson, Sam Hornby, Mark Shelton, Marcus Dinanga and Sam Austin – who were more than up to the level of their senior counterparts.

Austin in particular was a livewire down the right flank and hit the post early on, while Dinanga scored a fine hat-trick.

Hornby – the son of Brewers coach Neill – made several fine saves as Bedworth

attacked in the second half while Shelton was assured in his defensive duties at right-back, as well as a dangerous outlet overlapping Austin.

Recent signing Ferguson, too, looked a very tidy player. He was composed on the ball, able to find space from the tightest of situations and his range of passing was evident. He, like the rest, is a player of real potential.

The former Grays Athletic player will be battling to get into the first team before long but must first build his fitness to match that of the other central midfielders currently ahead of him in the pecking order – no mean feat. The substitutes that came on also showed real promise. Jack O'Brien and Charlie Catter stepped in ably for O'Connor and Cansdell-Sherriff at centre-half, while Ben Fox demonstrated his quality on the ball both in the middle and taking balls in the channels.

The entire squad was strong and played well – six of them are on the fringes of Albion's first team and the others performed superbly alongside them.

What does that say of the strength in depth that this side has?

Of course, not too much can be read into that particular game. Bedworth are four leagues below the Brewers after all and it was a few weeks ago now.

But just by reading the teamsheet, you could conceivably see that starting 11 go out for an FA Cup or League Cup game and be confident of the 100 per cent effort and commitment that comes with a Burton Albion side – and they would not be unlikely to get a positive result, either.

Those youngsters all have the potential to make Albion's first team and the other six already have.

That wealth of options in the Brewers' League One push is a testament to all the work that has gone on behind the scenes in recent years at the Pirelli, from new signings for the first team to the excellent work done with the academy.

All deserve credit for building a squad with such quality running right throughout.

How many of those players, then, could be facing Swindon Town today? A fair few, one would wager.

There is a new manager at the helm at the County Ground now – with former player Martin Ling taking the helm following the departure of Mark Cooper.

Last time the two sides met, Town could not get past the Brewers' high-pressing forward line, regularly pinned back in their own half and unable to seriously threaten Jon McLaughlin in goal.

Of course, a new manager brings a different style of play and it remains to be seen if Swindon will go slightly more direct than they did under Cooper.

Make sure to follow me on Twitter at [@AshWilkinsonBM](#) and [@BurtonMailSport](#) and let's chat Brewers! Make sure to pick up your copy of tomorrow's Burton Mail for full match analysis from today's match and all the latest Brewers news.

Enjoy the game – and have a wonderful new year!

Ashley



Independent Commercial • Property Consultants • Surveyors and Valuers

We are pleased to continue our support for
Burton Albion Football Club and wish them every
success in the coming season

184 Horninglow Street, Anson Court,
Burton on Trent, Staffordshire DE14 1NG
Tel: 01283 500030 Fax: 01283 500033



Email: burton@salloway.com
Web: www.salloway.com



Also at: 1 New Park Place
Pride Park
Derby, DE24 8DZ
Tel: 01332 298000
Fax: 01332 299799
Email: derby@salloway.com

Britannia House, Cottage Terrace
The Ropewalk
Nottingham NG1 5DX
Tel: 0115 9473377 Fax: 0115
9473354
Email: nottingham@salloway.com

REMI MATTHEWS

ON THIS DAY

GOALKEEPER REMI MATTHEWS WAS BORN ON FEBRUARY 10TH. WE TAKE A LOOK BACK AT WHAT HAPPENED ON THIS DAY IN THE PAST.

IN THE NEWS - FEBRUARY 10TH

1942
The first gold record is presented to Glenn Miller for "Chattanooga Choo Choo".

1964
Bob Dylan releases "The Times They Are a-Changin'" his 3rd album, by Columbia Records.

1970
An avalanche crashes down on a ski resort in Val d'Isere, France, killing 42 people, mostly young skiers.

1992
Mike Tyson, a former boxing champion, was found guilty of raping Desiree Washington.

1996
The IBM supercomputer Deep Blue defeats Garry Kasparov in chess for the first time.

2005
Prince Charles announces he will marry his long-term partner Camilla Parker Bowles on April 8th.



WHO WAS BORN

1986
Chelsea striker Radamel Falcao

1966
Bake-off judge Paul Hollywood

1950
Swimmer Mark Spitz



TOP OF THE POPS

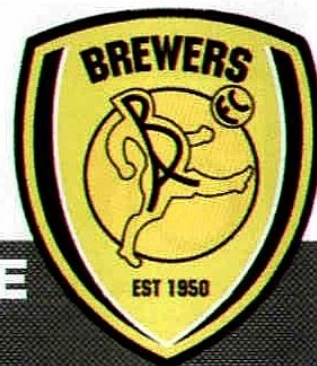
1992
Wet Wet Wet - Goodnight Girl

1976
Abba - Mama Mia

2001
Atomic Kitten - Whole Again



COMMERCIALLY SPEAKING



LAST CHANCE TO TAKE ADVANTAGE OF HALF SEASON TICKETS

IT'S your last chance to take advantage of **Burton Albion's Half Season Ticket offer.**

Make sure you don't miss any League One games for the remainder of the season by taking advantage of our great deals

Follow Nigel Clough's team all the way to May as Albion chase a second consecutive promotion – by buying a Half Season Ticket.

Running from January 2 through to the final home game of the League One season, the Half Season Tickets not only offer the best value for money but also mean fans will have secured their tickets for all the great games coming up in 2016.

This includes the visits of local rivals Chesterfield, former Premiership clubs Blackpool and Wigan and promotion-chasing Gillingham - in what may prove a vital six-pointer for our last home game of the season.

The Half Season Tickets prices offer big savings on matchday admission prices with adults saving £77 (seats) and £69 (terraces).

Seating:
ADULTS £165

OVER 65S £149
YOUNG PERSONS (17-22) £149
UNDER 17S £83

Terrace:
ADULTS £140
OVER 65s £124
YOUNG PERSONS (17-22) £111
UNDER 17s £33

Visit the club shop, call 01283 565938 or download an application form at www.burtonalbionfc.co.uk



LAST MATCH SPONSOR PHOTOS

vs DONCASTER



Thank you to all our sponsors for the game against Doncaster, we hope you had a fantastic day with us, and we hope to see you soon. Not pictured are the Programme Sponsors Rubicon Print.

TODAY'S SPONSORS

vs SWINDON TOWN



Thank you to all our sponsors, we hope you have a great time with us and we hope to see you again very soon. For more information on matchday sponsorship please call 01283 565938

NEW YEAR'S EVE REVELLERS AT THE PIRELLI STADIUM ARE SET FOR AN E-MACULATE EVENING

If you are still unsure what to do on New Year's Eve then grab a last-minute spot at the Pirelli Stadium.

A champagne reception is followed by a six-course feast with a chance to welcome in 2016 with live music and a late bar until 1am.

The glittering black tie event features E-maculate – leading exponents of smooth soul, R&B and Motown sounds.

On lead vocals they have Vernon Lewis, described as "one of the greatest British exponents of the authentic American sound".

Call 01283 565938 to book.

IT'S BEEN A RECORD BREAKING CHRISTMAS AT THE PIRELLI STADIUM

It has been record-breaking Christmas at the Pirelli Stadium with more people than ever enjoying festive party nights at the home of Burton Albion.

More than 2,500 people enjoyed a party here this Christmas season.

The popularity of the Christmas party nights made the Pirelli Stadium the place to be whether you were treating staff or entertaining clients.

Party-goers enjoyed a four-course festive-themed meal followed by music and dancing.

Club photographer John Potts captured some of the fun in these images.



GET IN TOUCH WITH US

www www.burtonalbionfc.co.uk/commercial

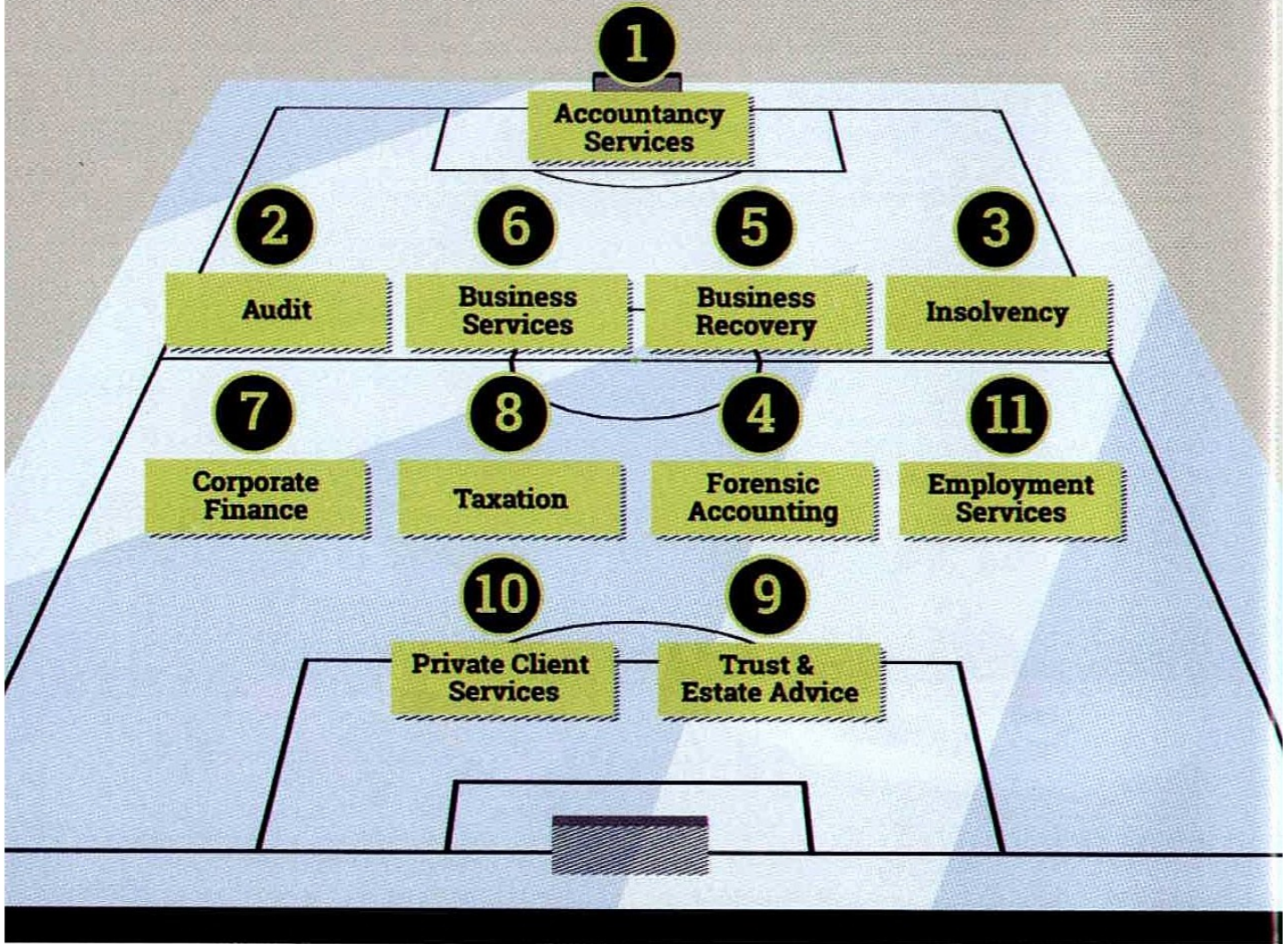


Call us on 01283 565938



business@burtonalbionfc.co.uk

TEAM PLAYERS



We've worked long and hard putting our team together.
They've been tactically formed to help create long term success
for you and your business.

Contact John Southwell for an informal discussion on how we can help.

Tel: **01283 507960** | Email: **burton@dains.com**

Your Future. Figured.

THE BREWERS

TICKETS & TRAVEL

UP NEXT

BLACKPOOL FC

Blackpool FC were founded in 1887 and play their home games at Bloomfield Road, which holds a capacity of 17,338. Based in West Lancashire, the club are nicknamed the Seaside and are known for playing in tangerine colours. They are currently managed by former Newcastle United player Neil McDonald, who was appointed in the summer.

After becoming founder members of the Lancashire League in 1889, which they won the title at the fourth attempt, Blackpool entered the Football League in 1896. They won the Division Two title under Harry Evans in 1930, with striker Jimmy Hampson scoring 45 league goals.

The Seaside were relegated from the First Division after three seasons but soon bounced back in 1937 and then remained in the top flight until 1967. During this period the club famously won the FA Cup in 1953, defeating Bolton Wanderers 4-3 at Wembley. The game was dubbed the 'Matthews Final' thanks to the performance of Stanley Matthews with Stan Mortensen also scoring a hat-trick.

The club bounced between the top two divisions in the early seventies before being relegated to Division Three in 1978. They slumped to the bottom tier in 1981 and returned to Division Three as runners-up after four seasons. During the next two decades the team were predominantly in Division Two and with Simon Grayson in charge, they were promoted to the Championship in 2007, beating Yeovil Town 2-0 in the play-off final.

Ian Holloway became manager in 2009 and guided the club to the Premier League in his first season, with a play-off victory over Cardiff City. Despite a strong start to their top flight campaign, they were relegated on the final day of the season. The following season saw them reach another play-off final, which they lost 2-1 to West Ham. Recent years has seen much turmoil at Bloomfield Road due to disgruntlement with the owners, managerial changes and relegation to League One.



FACT FILE

NAME: Blackpool
NICKNAME: The Seaside
FOUNDED: 1887
GROUND: Bloomfield Road
CAPACITY: 17,338
CHAIRMAN: Karl Oyston
MANAGER: Neil McDonald
14/15 POS: 24th Championship
WEB: blackpoolfc.co.uk
TWITTER: @BlackpoolFC
MOST APPEARANCES:
 Jimmy Armfield - 569
MOST GOALS
 Jimmy Hampson - 252
LARGEST VICTORY:
 10-0 - Lanerossi Vicenza
 Anglo-Italian Cup 1972

COMING SOON TO THE PIRELLI STADIUM



VS BLACKPOOL

02.01.2016

KICK-OFF 15:00PM



VS SHREWSBURY TOWN

23.01.2016

KICK-OFF 15:00PM



VS BRADFORD CITY

06.02.2016

KICK-OFF 15:00PM



NEXT AWAY FOR THE BREWERS



VS COVENTRY CITY

16.01.2015

KICK-OFF 15:00PM



TICKET PRICES

ONLINE PRICE: Adults: £20 | Senior 60+: £15
 Young Adult: £15 | Juniors: £7 | Under 12: £7

IN PERSON/TELEPHONE: Adults: £18 | Senior 60+: £13
 Young Adult: £13 | Juniors: £6 | Under 12: £6

SUPPORTERS COACH

Departure from the Pirelli Stadium is 12:45am, expected return at 6:00am approx and the price per seat is £750

ADVANCED TICKET PRICES 2015/16

SEATING

ADULT: £20
 65+/17-22: £18
 U17: £10

TERRACE

ADULT: £17
 65+/17-22: £15
 U17: £5

ON THE DAY TICKET PRICES 2015/16

SEATING

ADULT: £22
 65+/17-22: £20
 U17: £12

TERRACE

ADULT: £19
 65+/17-22: £17
 U17: £5

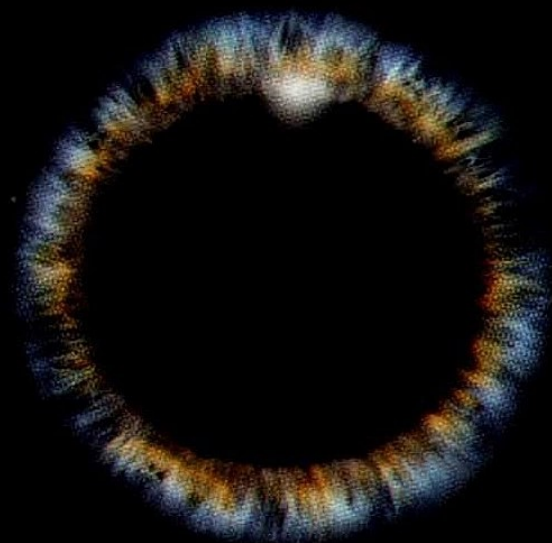
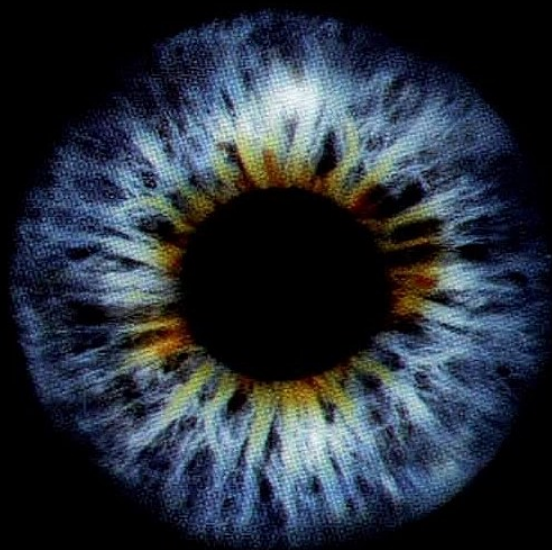
All home and away tickets can be purchased in advance from the club shop or by calling 01283 565938 or via our new online ticketing system www.burtonalbionfc.co.uk/tickets admission to the game will still be available as pay on the gate depending how many tickets remain for sale. Please note there will be a £2 price increase on match tickets on the day of the game.



THE OFFICIAL MATCHDAY PROGRAMME OF BURTON ALBION FOOTBALL CLUB

vs SWINDON TOWN

pirelli.co.uk



ENGINEERED
TO EXCITE

P ZERO

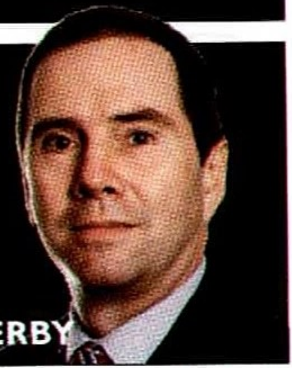


POWER IS NOTHING WITHOUT CONTROL

TECHNOLOGY
DESIGNED WITH
THE BEST CAR
MAKERS TO
ENHANCE THE
PERFORMANCE
OF YOUR CAR.

TONY BENTLLEY

VIEW FROM THE GANTRY

BBC
RADIO DERBY


TODAY MARKS A SIGNIFICANT MILESTONE IN THE HISTORY OF BURTON ALBION AS IT IS THE CLUB'S 300TH FOOTBALL LEAGUE GAME. LITTLE DID BREWERS FANS OF OLD EVER BELIEVE THAT THEIR SIDE WOULD NOT ONLY REACH THE FOOTBALL LEAGUE. NOT ONLY THIS, BUT THAT THEY WOULD STAY THERE, PLAY AT WEMBLEY AND ALSO GET PROMOTED INSIDE THEIR FIRST SIX SEASONS.

Burton have played 57 different sides as a League club, having played Accrington Stanley, Morecambe, Cheltenham Town & Northampton Town the most - 12 times each. The most goals scored against any side is 22 against Morecambe, but Albion have also conceded the most, 19, against the same team.

Of those 57 sides only two are currently playing at a higher level than League One - Bournemouth in the Premier League and Rotherham United in the Championship. Nine sides have gone the other way and have dropped out of the Football League, with Darlington and Hereford United dropping the furthest as both folded and reformed as Darlington 1883 and Hereford FC respectively. Of sides that we've played in more than one season the best record is against Rochdale with 6 wins and a draw from the 7 matches. The worst record is just a single point from 4 matches against Stevenage.

Jacques Maghoma is the only player to have played in more than 50% of the previous 299 Football League games making 138 starts and 17 substitute appearances. Current players Robbie Weir and Damien McCrory are closing in on Maghoma's record appearance total. In total 8 players have played in more than 100 FL games - Maghoma, Weir, McCrory, John McGrath, Jimmy Phillips, Andy Corbett, Aaron Webster and current player Phil Edwards.

There have been 126 players to pull on the Brewers shirt on those games, with 10 of them playing in only a single game. Four players - Marc Edworthy, Aaron Brown, Brian Hughes and Lee Lucas all started their solitary game, whilst Garyn

Preen, Jason Banton, Sam Austin, Florent Cuvelier, Jack Dunn and Scott Shearer all made a solitary substitute appearance.

The club has had 66 different goal scorers in the FL so far with Billy Kee scoring the most goals 39. Six players have scored on their league debut for the club, when starting a game - Justin Richards, Michael Symes, Rory Delap,

Rene Howe, Lucas Akins and Kevin Stewart. Whilst 3 others scored on their league debuts as a substitute - Greg Pearson, Jordan Chapell and Florent Cuvelier.

Here's looking forward to the 400th

@BrewersTony





BREWERS ACADEMY

2015/16 FIXTURES & RESULTS

BURTON ALBION - YOUTH ALLIANCE U18 NORTH EAST

Sat Aug 8	Grimsby Town	H	W 3-0
Sat Aug 15	Oldham Athletic	A	W 1-0
Sat Aug 22	Notts County	H	W 2-0
Sat Aug 29	Morecambe	H	W 3-1
Sat Sep 12	Chesterfield	A	D 2-2
Sat Sep 19	Rotherham United	H	W 4-1
Sat Oct 3	Wigan		Cup 2
Sat Oct 10	Hartlepool United	A	L 2-1
Sat Oct 17	Mansfield Town	H	W 3-0
Sat Oct 24	York City	H	W 2-0
Sat Oct 31	Shrewsbury Town	H	W 4-0
Sat Nov 14	Lincoln City	A	L 3-1
Sat Nov 21	Doncaster Rovers	H	D 1-1
Sat Dec 5	Scunthorpe United	A	L 1-0
Sat Dec 19	Oldham Athletic	H	
Sat Jan 9	Grimsby Town	A	
Sat Jan 16			Cup 4
Sat Jan 23	Notts County	A	
Sat Jan 30	Chesterfield	H	
Sat Feb 6	Rotherham United	A	
Sat Feb 13			Cup 5
Sat Feb 27	Mansfield Town	A	
Sat Mar 12	Hartlepool United	H	
Sat Mar 19	York City	A	
Sat Apr 2	Bradford City	H	
Sat Apr 9	Lincoln City	H	
Wed Apr 20	YA Cup Final		
Sat Apr 23	Doncaster Rovers	A	
Sat Apr 30	Scunthorpe United	H	

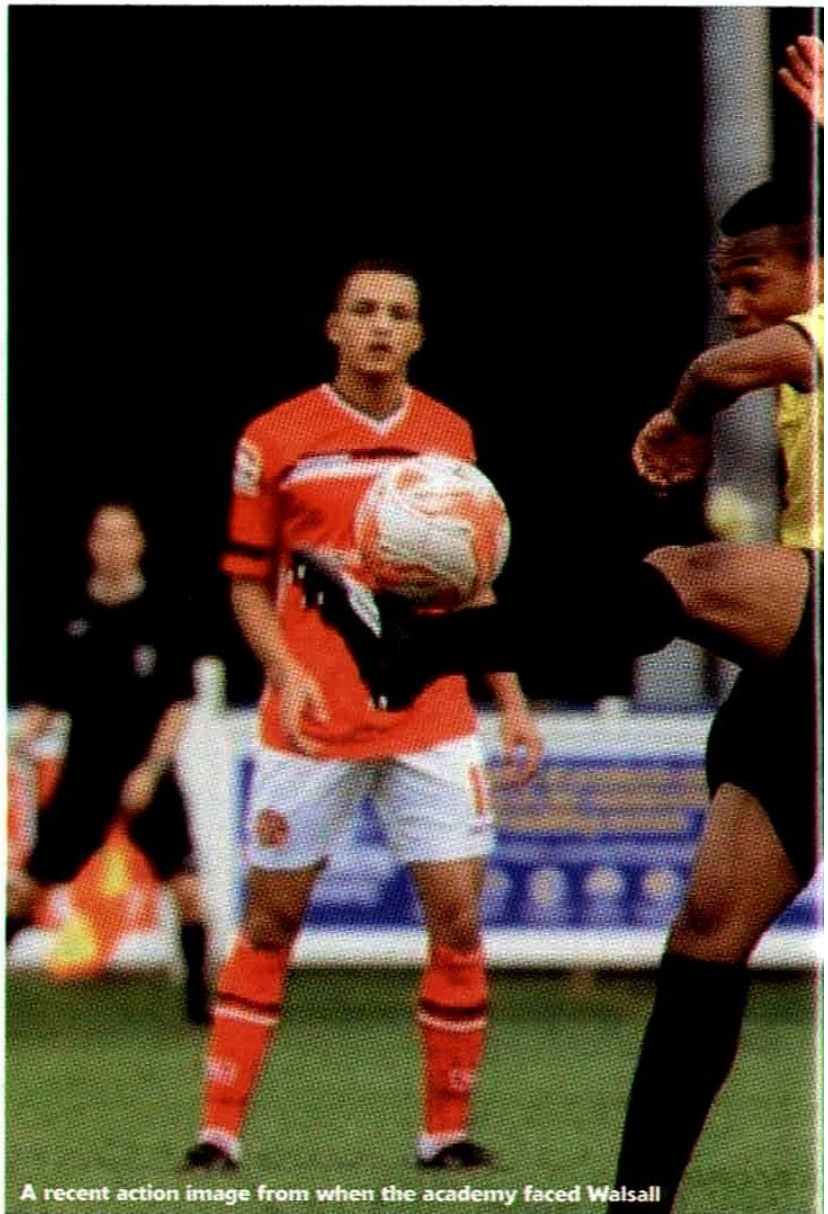
YOUTH ALLIANCE U18 NORTH EAST LEAGUE TABLE 2015/2016 SEASON

Team	P	W	D	L	Pt
1 Notts County U18	11	7	0	4	21
2 Mansfield Town U18	11	6	3	2	21
3 Scunthorpe U18	11	6	2	3	20
4 Lincoln City U18	11	6	2	3	20
5 Doncaster U18	11	5	4	2	19
6 Hartlepool U18	10	5	3	2	18
7 Bradford City U18	10	6	0	4	18
8 Burton Albion U18	10	5	2	3	17
9 Rotherham U18	10	4	1	5	13
10 Chesterfield U18	11	3	3	5	12
11 Oldham U18	10	3	1	6	10
12 York City U18	10	0	2	8	2
13 Grimsby Town U18	10	0	1	9	1

Hello and welcome back to the Pirelli. The academy has been through a real transition phase in the last few weeks and one of those things is being introduced to the PMA

The PMA is an online tool which all academy staff has access to and is a great tool for logging any training sessions each player in the academy has taken part in.

In terms of sport science the PMA enables me to do many things in a much easier manner. Each day our youth team players fill out wellbeing scores online rating their energy levels out of 10, their muscle soreness out of 10 and the amount of sleep they have had. These scores are filled out every morning by 9 o'clock. The PMA then will alert me with any player who is feeling sore, tired and had little sleep the night before. This information can then be relayed to the coaches on training loads for each player and how much work each player should be doing on a day to day basis. The PMA also allows me to upload any testing data which all adds to each player's performance clock.



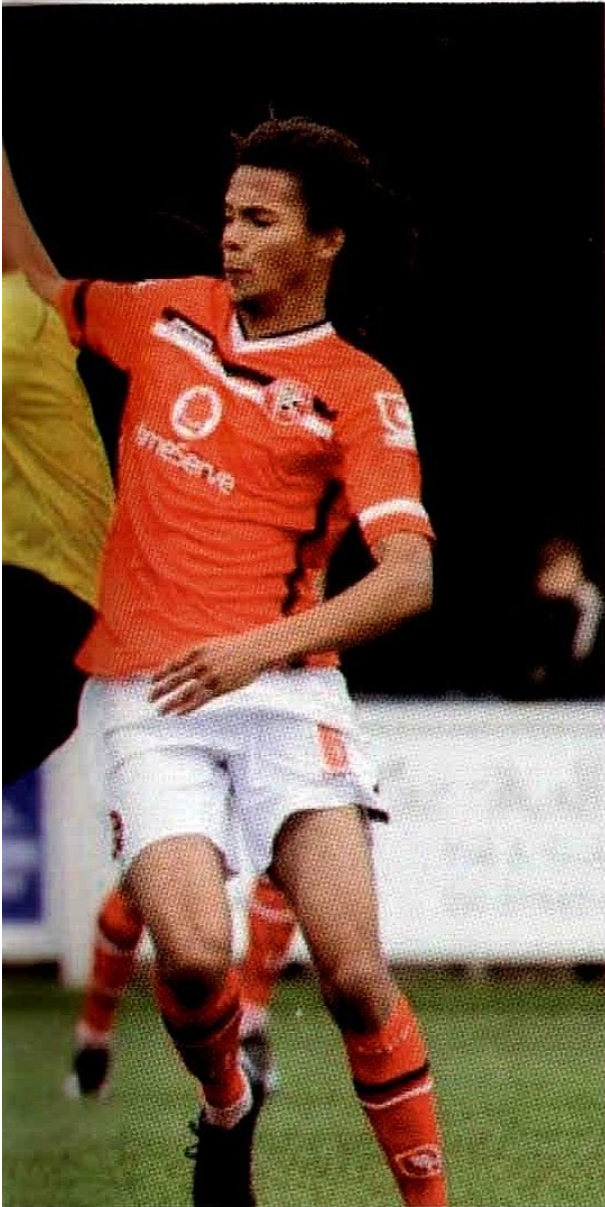
A recent action image from when the academy faced Walsall

Words by Lewis Chambers

The performance clock for each player will allow the coaches to see how much game time a player has had, how many training minutes they have taken part in, the sessions they have participated in, the amount of gym time they have had and what they have been doing in the gym as well as all their fitness testing data.

All the data goes towards each player's performance clock can be viewed by each coach so we as staff can monitor what each player has done and identify any areas which a player may need to spend more time on.

Overall the PMA has helped us as an Academy an awful lot over the past few weeks and we are all excited to carry on using this tool throughout the rest of the season and many more seasons to come in the future.



JACK SHARKEY



Hello and welcome to today's fixture against Swindon Town. This season two of our players, Kelvin Maynard and George Taft, sustained ACL injuries. They are both well into their rehabilitation process, with Kelvin having already started running sessions. ACL injuries are severe and are thankfully a rare occurrence, but in recent seasons there has been a noticeable increase in incidence rates of this form of injury to players across the country. I will use this week's article to give you more insight into this form of injury and why it occurs.

In basic terms the knee is a hinged joint where the femur bone (upper leg) meets the tibia (lower leg). The joint is held together by four primary ligaments two on the sides of the knee to prevent lateral movement and two inside the joint to control the back and forth movement of the knee. The two ligaments on the sides of the knee are the Collateral ligaments, namely; the Lateral Collateral Ligament (LCL) which is found on the outside of the knee connecting the fibula to the femur, and the Medial Collateral Ligament (MCL) on the inside of the knee connecting the femur to the tibia. The ligaments inside the joint are the Cruciate Ligaments and are as follows: The Anterior Cruciate Ligament (ACL) which runs diagonally in the middle of the knee, and the Posterior Cruciate Ligament (PCL) which is located in the back of the knee.

Although the most common ligament strained in football is the Medial Ligament on the inside of the knee, damage to the ACL is by far the most severe. Incidence rates of players sustaining an ACL injury are rare but in recent years have become more prevalent in the football community. Causes can range from direct contact during a tackle, to something quite insignificant such as landing incorrectly from a jump or changing direction quickly. A suggested cause for the increase in recent years of this injury is thought to be as a result of harder pitches, and longer studs.

Similar to the grading's for muscle damage, ligament damage is graded from 1 to 3. This ranges from Grade 1 which is a mild strain from over stretching, to Grade 3 where there is a complete tear of the ligament. Unfortunately with ACL injuries slight strains are rare, with the majority of injuries being complete or near complete tears resulting in instability of the knee joint.

In the athletic population surgical treatment of a ruptured ACL will most certainly always be needed, as the ligament will not repair itself without treatment. This is done via surgery whereby a graft from the Patella Tendon or Hamstring Tendon is taken and used to reconstruct the ligament. Most procedures are performed using Arthroscopy which is minimally invasive resulting in less pain and shorter recovery times.

Once surgery is complete the rehabilitation process begins whereby the focus is to regain knee strength and motion. From the date of surgery it is hard to pinpoint exactly when a player will be able to return to full training as recovery rates vary person to person. However, typically a recovery time of 6-9 months is given post-surgery before a player can return to playing again.

To actively reduce the risk of players experiencing an ACL injury strength work is crucial. As a club the players regularly perform strengthening work of their glutes, core, and hamstrings to give them the best possible chance of this never occurring.

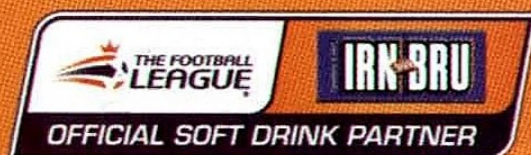
Enjoy the game.

Jack Sharkey

TODAY, YOU'RE AT THE TOP OF THE LEAGUE.

It's time for kick off.
You are where you should be.

Get in!



Burton Albion Community Trust

BREWERS SQUAD PAY ANNUAL VISIT TO BURTON HOSPITAL

FOOTBALL-loving youngster Daniel Brackstone will be spending Christmas in Queen's Hospital, which is why Burton Albion manager Nigel Clough was keen to help lift his spirits. The Brewers boss, his backroom staff and the entire first team squad, paid a visit to the hospital to wish patients and staff a merry Christmas - but no-one was more excited to see the League One leaders than seven-year-old Daniel.

In traction after suffering a bad break to his leg, Daniel will be on the ward on Christmas Day but his mum Clair and dad Adrian are planning a second Christmas for him when he gets back home in January.

In the meantime, he enjoyed a pre-Christmas boost by meeting Nigel Clough and his favourite players. Daniel was presented with a signed copy of the club's new photo book and posed for pictures with the Brewers squad.

The team made a tour of the hospital dropping in on the wards to chat with patients and staff and were joined by club mascot Billy Brewer.

The players handed out Christmas gifts and autographs and helped cheer the spirits of the patients.

Burton Albion Community Trust organises the visit to the hospital each Christmas.

Head of community Andy Taylor said: "The players and staff always enjoy visiting the hospital. It's a chance to meet the dedicated staff who do such a tremendous job and to bring a bit of Christmas cheer to the patients who



maybe spending the festive season in hospital."

Deb Price, from Burton Hospitals NHS Foundation Trust, said: "We were delighted to welcome Nigel Clough and the Burton Albion players to Queen's Hospital. The staff and patients really

enjoyed the visit. Many of them support Burton Albion and were thrilled to meet the team and to have a chance to chat with the players and backroom staff."

Thanks to Mcvities, Nestlé and the Co-op for donating the presents handed out during the visit.

JUNIOR BREWERS CHRISTMAS PARTY A BIG SUCCESS

REMI Matthews and Stuart Beavon were the star attractions at the Junior Brewers Christmas Party.

Around 70 youngsters came to the Pirelli Stadium to enjoy festive fun and games and to meet Santa at the traditional Junior Brewers Christmas Party.

They were also given the chance to meet two of their Burton Albion heroes - striker Stuart Beavon and goalkeeper Remi Matthews.

The Albion stars posed for pictures with the young fans, signed shirts and other souvenirs and took questions from the youngsters.

A seasonal membership to the Junior Brewers offers young fans exclusive perks, such as the chance to be a mascot, exclusive events and competitions throughout the season, Christmas and Easter parties and a Junior Brewers Day, where young fans can meet the players and enjoy a behind the scenes ground tour.

For more information email bactadmin@burtonalbionfc.co.uk call 01283 565938 or pick up an application form from the club shop.



Ashfield



@burtonalbionCT



Burton Albion Community Trust



BurtonAlbionCT



bactofficial

PROUD SUPPORTERS OF THE BREWERS



- Payroll
- Self assessment returns
- Property accounts
- Bookkeeping
- Limited company accounts
- Tax Planning
- Audit
- Management accounts
- Construction Industry
- VAT returns

Burton's leading accountants and business advisors are proud supporters of Burton Albion

Chartered Certified Accountants & Registered Auditors

www.ads-accountancy.co.uk

ALWAYS A FULL GATE.



For all your Agricultural, Equestrian & DIY requirements

Traditional Farming • Windows & Metal Gates • Timber & Decking • Oil & Fuel Tanks

01538 753184 • www.wburton.co.uk

Greenman Stores, Theapwood, Nr Cheadle, Staffordshire ST10 4QZ





#BrewersLadies

BREWERS LADIES HALF SEASON REVIEW

JUNE

This month consisted of trials, a formation of a Youth Team focussed on engaging 16-19 year olds and the continuation of the 1st team and development teams in the senior section after trophy winning seasons in 2014/15.

JULY

We started the month with an intense fitness based session including Strength & Conditioning sessions every week with Darryl Taylor from Mansfield Town FC. We finished the month with 12 days training in Norway playing 3 fixtures and winning all 3 (one against a team consisting of full-time players) from the league below the Norwegian top division

AUGUST

We returned home and it was straight into games against Coalville (W 10-0), Stoke City (W 1-0), Bolton Wanderers (L 1-4) and Crewe Alexandra (L 2-4). The focus now was around pattern of play and phases to get the teams ready for the season ahead.

SEPTEMBER

The season started with a FA Cup win against league above side Crusaders (W 4-3) before we travelled to Stoke to play Florence in our 1st league game running out 10-0 winners on the day. Our only other game in September was an 8-2 away win at expected title challengers Shrewsbury Juniors Ladies.

OCTOBER

October brought FA Cup wins against Stourbridge (W 3-0) and Ruddington (W 6-0) before we returned to league action with wins against Florence (W 6-0) and Shrewsbury Juniors Ladies (W7-1) to seal the double over both sides.

NOVEMBER

We started the month with a good win away at Shrewsbury Town (W 4-0) before turning our attentions to the FA Cup against Radcliffe Olympic a team 20 places and 2 leagues above us. After an excellent performance we were unlucky to get knocked out 4-3 on penalties after a 1-1 result after extra time. There was no cup hangover as we then played Stone Dominoes (W 3-0) and returned to winning ways straight away.

DECEMBER

The month started with a 4-0 victory over Shrewsbury Town to seal another league double to date our 3rd. Poor weather caused postponements but we managed to organise a friendly against Boldmere St Michaels where a Brewers XI ran out 6-0 winners.

The squads at senior level are doing really well and looking to get back to match action in January looking to keep their excellent starts to the season going.

JANUARY

The players report back for the second half of the season with a home fixture on the 3rd January against Mid-Table Bilbrook Ladies. The Brewers ladies I'm sure will return in good spirits looking to continue their excellent 1st period of the season as they chase the league title, promotion and

hoping to be the 1st team to retain the West Midlands Regional League Cup in league history.

#BackTheBrewersLadies



BAFC LADIES FIXTURES 2015/2016

06/09/2015	Crusaders LFC	W 4-3
13/09/2015	Florence Ladies	W 10-0
20/09/2015	Stourbridge LFC	W 3-0
27/09/2015	Shrewsbury Ladies	W 8-2
04/10/2015	Florence Ladies	W 6-0
11/10/2015	Ruddington AFC	W 6-0
18/10/2015	Tamworth (County Cup Round 1)	L 3-1
25/10/2015	Shrewsbury Ladies	W 7-1
01/11/2015	Shrewsbury Town	W 4-0
15/11/2015	Radcliffe Olympic AFC	D 1-1
22/11/2015	Stone Dominoes	W 3-0

CHRISTMAS BREAK - DECEMBER 21ST - 2ND JANUARY

03/01/16	Bilbrook Ladies	H
17/01/16	Atherstone Rangers	H
07/02/16	Stone Dominoes	H
28/02/16	Stokingford AA Pavillion	A
13/03/16	Wryley Juniors	A

HOME FIXTURES TAKE PLACE AT ST GEORGES PARK AND KICK-OFF TIME WILL BE 2PM ON SUNDAYS, UNLESS STATED OTHERWISE

For season 2015/16 the ladies will run teams from Under 10s upto three open age teams (16s +) and are always looking for new players to join the club. For more information feel free to email the club at: info@balfc.uk or call Adam Smallman - 07970 096535.





TL Darby Volkswagen.

Proudly supports Burton Albion.

Centrum East Retail Park, Eighth Avenue, Burton On Trent,
Staffordshire, DE14 2WG. Telephone: 01283 244413.

www.tldarby.volkswagen.co.uk

Open: Mon - Fri 7.30am - 7.00pm, Sat 8.00am - 5.30pm, Sun 10.00am - 4.00pm.

THE BIGGEST RIDE IN FOOTBALL JUST GOT BIGGER

Football to Amsterdam
3-5 June 2016



**PROSTATE
CANCER UK**



LMA
LEAGUE MANAGERS
ASSOCIATION



Men United. Keeping friendships alive. prostatecanceruk.org/amsterdam



Junior Brewers

Merry Christmas Brewers Fans

Good afternoon Brewers fans, and welcome to the Pirelli Stadium for today's Sky Bet League 1 encounter with Swindon Town! A warm welcome to the fans, players, staff and officials of Swindon, I hope you enjoy the game! Firstly, I hope you all had a fantastic Christmas, it's been such a busy time for everyone around the football club, with fixtures taking place here, there and everywhere, and the Community Trust working right through Christmas around the community! The Christmas Holiday Camps took place last week on Monday, Tuesday and Wednesday, and they're busy planning for another big year coming up on all of their projects!

The fixtures have been coming thick and fast, and it's great to see the new management team settling in so well! Actually, I say settling in but this is very familiar territory to them all, but nonetheless it's fantastic to see them back! Nigel is a fantastic manager and left us at the top of the conference in 2009, when he left for Derby. He now returns to a team that were top of the league when he joined, but just 2 leagues higher!! So I have no doubt he'll do a brilliant job, and maybe lead us to more success (and the Championship, dare I say it)!

Anyway, I hope all you Junior Brewers had a fantastic Christmas and got exactly what you asked Santa to get for you! I know exactly what I asked for, and that was for the Brewers to be top of the league at Christmas, and I got exactly that!! It's not easy in this league to be as high as we are, but it's through hard work and all the players working for each other, which is exactly what's happening! Hopefully this will continue to happen, as they all seem to want the same success, and for me they deserve a lot of credit!

Anyway, back to today's game, we know it'll be tough but it will surely be a fantastic game for all to watch! Also, a safe trip back home for all associated with Swindon at today's game, hope you have an enjoyable day here in Burton.

COME ON YOU BREWERS!

Billy Brewer



Quick Fire Quiz!!

- Q1 Which Burton Albion player scored the second goal away at Gillingham?
- Q2 Which player wears the number 4 shirt for Burton Albion?
- Q3 Which Burton Albion player is an international for Luxembourg?
- Q4 How many goals has Stuart Beavon scored so far this season?
- Q5 Who is the main sponsor for Burton Albion this season?
- Q6 How many goals has Damien McCrory scored in December?
- Q7 How many years have Burton Albion been playing at the Pirelli Stadium?

Years
 QUICK QUIZ: Q1: Akins Q2: John Mousinho Q3: Joachim Q4: Five Q5: Baytree Cars Q6: Two Q7: 10

Today's Mascots



William Wooliscroft

FAVOURITE TEAM:
BURTON ALBION & BARCELONA
FAVOURITE PLAYER:
NEYMAR JR & LUCAS AKINS



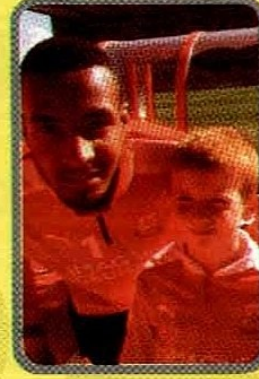
Lucas Robson-Howell

FAVOURITE TEAM:
BURTON ALBION
AGE:
EIGHT



Keiron Whetton

FAVOURITE TEAM:
BURTON ALBION
AGE:
SEVEN



Jake Halliday

FAVOURITE TEAM:
SWINDON TOWN
FAVOURITE PLAYER:
FABIEN ROBERT

Mascot Competition Winners

We offered two young Brewers fans the chance to be mascots at today's game by asking their families to nominate them and tell us why they deserved the prize.

The mascot package prizes have been donated by Burton Albion FC and the Free Kicks Foundation. The winners are:

LUCAS ROBSON-HOWELL, AGE 8

He was nominated by his uncle Curtis Robson who said: "When he was born he had a problem with his foot and was told he would probably never be able to play sport at school. He's gone through school having to have wheelchairs,

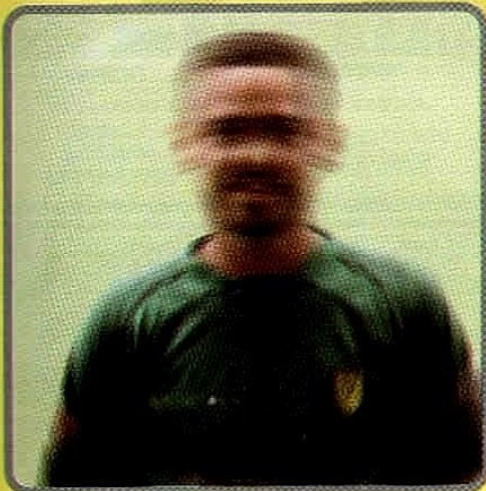
specially-made boots and a cast on his leg. The thing that makes him so deserving is that he never gave up and made himself be able to play sport and join in. He's a really special lad and his determination is unbelievable."

KEIRON WHETTON, AGE 7

He was nominated by his mum Samantha Phillips, who said: "When my son was born he was starved of oxygen, leaving him with cerebral palsy and epilepsy. But he has not let this hold him back. He has defied all the odds and is able to walk short distances and attend mainstream school. He always has a smile on his face and never lets his condition get him down."

Who am I?

Can you guess who this Brewers player is from the picture below?

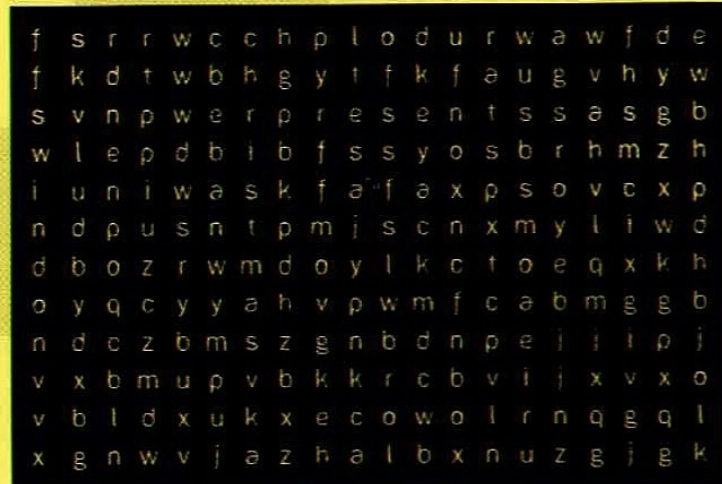


WHO AM I? Remi Matthews

WordSearch

Can you find the following 5 words in our wordsearch (Answers on Page 64)

christmas | swindon | santa | presents | rudolph





PLAYER SPONSORSHIP

01
 Jon **MCLAUGHLIN**
 Sponsored by

02
 Phil **EDWARDS**
 Sponsored by

03
 Shane **CANDELL-SHERRIFF**
 Sponsored by
EI MORGAN

04
 John **MOUSINHO**
 Sponsored by

05
 George **TAFT**
 Sponsored by

06
 Darius **CHARLES**
 Sponsored by
 TO SPONSOR THIS
 PLAYER PLEASE CALL
 01283 565938

07
 Callum **REILLY**
 Sponsored by

08
 Robbie **WEIR**
 Sponsored by

09
 Stuart **BEAVON**
 Sponsored by

10
 Lucas **AKINS**
 Sponsored by
KEITH & CHRISTINE NORRIS

11
 Nasser **EL KHAYATI**
 Sponsored by

12
 Calum **BUTCHER**
 Sponsored by
 TO SPONSOR THIS
 PLAYER PLEASE CALL
 01283 565938

13
 Aurélien **JOACHIM**
 Sponsored by

14
 Damien **MCCRORY**
 Sponsored by

15
 Tom **NAYLOR**
 Sponsored by

16
 Dean **LYNESS**
 Sponsored by

17
 Marcus **HARNESS**
 Sponsored by

18
 Zeli **ISMAIL**
 Sponsored by
 TO SPONSOR THIS
 PLAYER PLEASE CALL
 01283 565938

19
 Anthony **O'CONNOR**
 Sponsored by
LYN CALLADINE & KC TRUST

20
 Timmy **THIELE**
 Sponsored by
Kestral Building Services Ltd

21
 Mark **DUFFY**
 Sponsored by
BERNARD LAWES

22
 Jerome **BINNOM-WILLIAMS**
 Sponsored by
BERNARD LAWES

23
 Matty **PALMER**
 Sponsored by
BERNARD LAWES

24
 Liam **SLADE**
 Sponsored by

25
 Kelvin **MAYNARD**
 Sponsored by
Ben Robinson FINANCIAL SERVICES LTD

2015/2016 SKY BET
LEAGUE ONE TABLE

sky BET LEAGUE 1

	P	W	D	L	F	A	GD	Pts
1 Burton Albion	22	14	3	5	30	19	11	45
2 Walsall	21	12	6	3	37	19	18	42
3 Gillingham	22	12	5	5	42	28	14	41
4 Coventry City	22	11	7	4	39	23	16	40
5 Wigan Athletic	22	10	7	5	31	20	11	37
6 Peterborough Utd	22	10	4	8	47	34	13	34
7 Southend Utd	21	9	7	5	29	23	6	34
8 Bradford City	21	9	7	5	23	20	3	34
9 Sheffield Utd	22	9	6	7	34	30	4	33
10 Bury	22	9	6	7	33	34	-1	33
11 Millwall	21	9	4	8	31	31	0	31
12 Rochdale	22	8	6	8	28	26	2	30
13 Port Vale	22	8	6	8	27	26	1	30
14 Swindon Town	22	8	4	10	32	35	-3	28
15 Doncaster Rovers	22	7	7	8	26	31	-5	28
16 Scunthorpe Utd	22	8	3	11	25	29	-4	27
17 Blackpool	22	7	4	11	19	28	-9	25
18 Chesterfield	22	7	2	13	25	37	-12	23
19 Fleetwood Town	21	6	4	11	28	30	-2	22
20 Shrewsbury Town	22	6	4	12	27	33	-6	22
21 Barnsley	22	6	3	13	28	38	-10	21
22 Oldham Athletic	21	3	11	7	23	33	-10	20
23 Crewe Alexandra	22	5	5	12	22	37	-15	20
24 Colchester Utd	22	5	5	12	33	55	-22	20

NB: Table correct as of 21/12/15

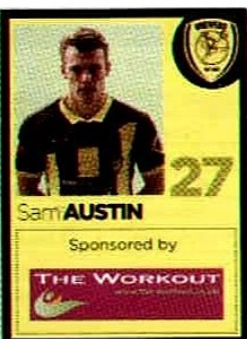
2015/2016 SEASON
PLAYER APPEARANCES

		League		Cup			
		P	S	P	S	G	G
1 Jon McLaughlin	21	0	0	0	0	0	0
2 Phil Edwards	22	0	0	2	1	0	0
3 S. Cansdell-Sherriff	12	0	0	1	1	0	0
4 John Mousinho	22	0	0	2	0	0	0
5 George Taft	0	0	0	0	0	0	0
6 Darius Charles	0	0	0	0	0	0	0
7 Callum Reilly	1	1	0	2	1	0	0
8 Robbie Weir	18	0	0	2	0	0	0
9 Stuart Beavon	19	1	5	0	0	0	0
10 Lucas Akins	12	9	3	4	0	0	0
11 Nasser El Khayati	19	1	8	1	1	0	0
12 Calum Butcher	13	3	2	4	0	0	0
13 Aurélien Joachim	0	7	0	2	1	0	0
14 Damien Mccrory	16	1	2	2	0	0	0
15 Tom Naylor	14	3	2	2	1	0	0
16 Dean Lyness	0	0	0	0	0	0	0
17 Marcus Harness	0	0	0	0	0	0	0
18 Zeli Ismail	0	3	0	0	0	0	0
19 Anthony O'connor	9	4	1	3	0	0	0
20 Timmy Thiele	7	11	1	2	1	0	0
21 Mark Duffy	21	1	3	2	0	0	0
22 J. Binnom-Williams	8	7	1	3	1	0	0
23 Matty Palmer	2	7	0	4	0	1	0
24 Liam Slade	0	0	0	0	0	0	0
25 Kelvin Maynard	0	0	0	0	0	0	0
26 Mark Shelton	0	0	0	0	0	0	0
27 Sam Austin	0	0	0	0	0	0	0
28 Sam Hornby	0	0	0	0	0	0	0
30 Tom Flanagan	5	1	0	2	0	0	0
31 Remi Matthews	1	1	0	4	0	0	0



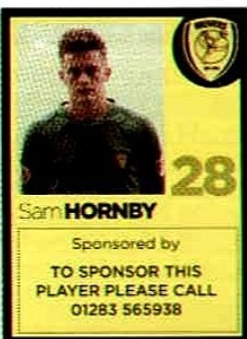
Mark SHELTON 26

Sponsored by
Ben Robinson FINANCIAL SERVICES LTD



Sam AUSTIN 27

Sponsored by
THE WORKOUT



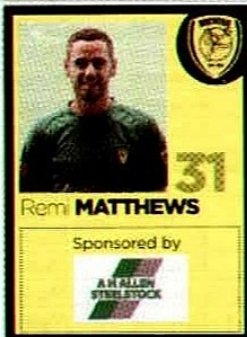
Sam HORNBY 28

Sponsored by
TO SPONSOR THIS PLAYER PLEASE CALL
01283 565938



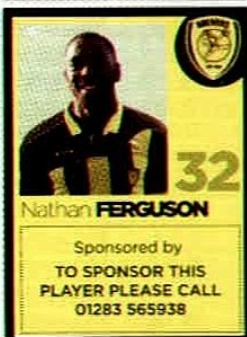
Tom FLANAGAN 30

Sponsored by
TO SPONSOR THIS PLAYER PLEASE CALL
01283 565938



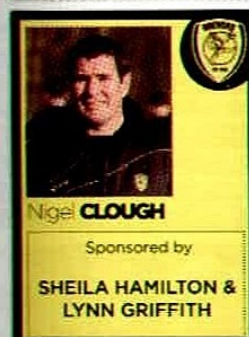
Remi MATTHEWS 31

Sponsored by
A H ALLEN STEEL STOCK



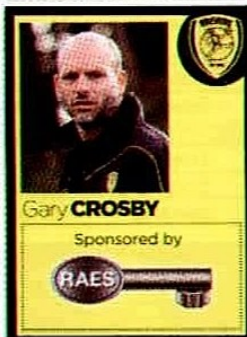
Nathan FERGUSON 32

Sponsored by
TO SPONSOR THIS PLAYER PLEASE CALL
01283 565938



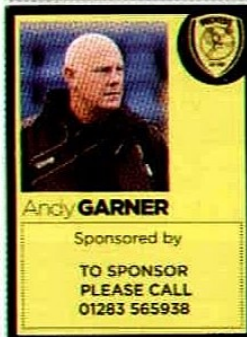
Nigel CLOUGH

Sponsored by
SHEILA HAMILTON & LYNN GRIFFITH



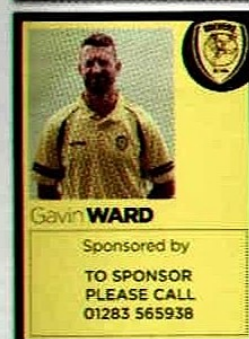
Gary CROSBY

Sponsored by
HAES



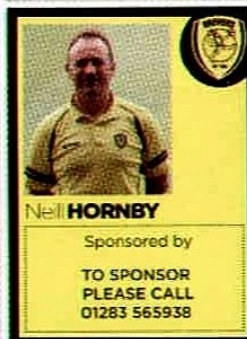
Andy GARNER

Sponsored by
TO SPONSOR PLEASE CALL
01283 565938



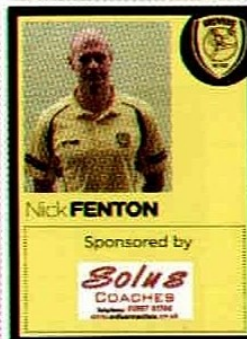
Gavin WARD

Sponsored by
TO SPONSOR PLEASE CALL
01283 565938



Neil HORNBY

Sponsored by
TO SPONSOR PLEASE CALL
01283 565938



Nick FENTON

Sponsored by
SOLUS COACHES



Matt ASH

Sponsored by
TO SPONSOR PLEASE CALL
01283 565938



Jack SHARKEY

Sponsored by
JULIE SNELLING



Ray HUDSON

Sponsored by
TAG



2015/2016 MATCH STATS

FIRST TEAM FIXTURES, RESULTS & LINE UPS

f /Burton-Albion-FC

@burtonalbionfc

@officialburtonalbion

YouTube / BrewersOfficial

DATE	OPPOSITION	H/A	K.O/ATT	RES	STARTING XI				
AUGUST									
Sat 8 Aug	Scunthorpe United	H	4,064	W 2-1	Matthews	Edwards	Mousinho	Cansdell-S	McCrorry
Tue 11 Aug	Bolton Wanderers COC R1	A	5,842	W 1-0	Matthews	Edwards	Mousinho	O'Connor	McCrorry
Sat 15 Aug	Barnsley	A	8,583	L0-1	McLaughlin	Edwards	Mousinho	Naylor	Cansdell-S
Tue 18 Aug	Blackpool	A	6,197	W 2-1	McLaughlin	Edwards	Cansdell-S	Mousinho	McCrorry
Sat 22 Aug	Peterborough United	H	3,407	W 2-1	McLaughlin	Edwards	Mousinho	Cansdell-S	McCrorry
Tue 25 Aug	Middlesbrough COC R2	H	3,414	L 1-2	Matthews	Naylor	O'Connor	Cansdell-S	B-Williams
Sat 29 Aug	Shrewsbury Town	A	4,780	W 1-0	McLaughlin	Edwards	Mousinho	Cansdell-S	McCrorry
SEPTEMBER									
Tue 1 Sep	Doncaster Rovers JPT R1	A	2,956	D 0-0	Matthews	Naylor	O'Connor	Flanagan	McCrorry
Sun 6 Sep	Coventry City	H	4,633	L 1-2	McLaughlin	Edwards	Mousinho	Cansdell-S	Binnon-W
Sat 12 Sep	Rochdale	H	2,787	W 1-0	McLaughlin	Edwards	Mousinho	Cansdell-S	McCrorry
Sat 19 Sep	Swindon Town	A	7,005	W 1-0	McLaughlin	Edwards	Mousinho	Cansdell-S	McCrorry
Sat 26 Sep	Chesterfield	A	6,752	W 2-1	McLaughlin	Edwards	Mousinho	O'Connor	McCrorry
Tue 29 Sep	Sheffield United	H	5,029	D 0-0	McLaughlin	Edwards	O'Connor	Mousinho	McCrorry
OCTOBER									
Sat 3 Oct	Southend United	H	2,948	W 1-0	McLaughlin	Edwards	O'Connor	Mousinho	McCrorry
Sat 10 Oct	Walsall	A	6,812	L 0-2	McLaughlin	Edwards	Mousinho	O'Connor	McCrorry
Sat 17 Oct	Fleetwood Town	A	2,893	L 0-4	McLaughlin	Edwards	Mousinho	O'Connor	McCrorry
Tue 20 Oct	Crewe Alexandra	H	2,666	D 0-0	McLaughlin	Edwards	Mousinho	Cansdell-S	McCrorry
Sat 24 Oct	Port Vale	H	4,076	W 2-0	McLaughlin	Edwards	Mousinho	Cansdell-S	B-Williams
Sat 31 Oct	Oldham Athletic	A	3,795	W 1-0	McLaughlin	Edwards	Mousinho	Cansdell-S	B-Williams
NOVEMBER									
Sat 7 Nov	Peterborough FAC R1	H	2,517	L 0-3	Matthews	Edwards	Mousinho	Flanagan	Binnon-W
Sat 21 Nov	Bury	A	3,788	L 0-1	McLaughlin	Edwards	Mousinho	Cansdell-S	Binnon-W
Tue 24 Nov	Wigan Athletic	A	8,117	W 1-0	McLaughlin	Edwards	Mousinho	Flanagan	O'Connor
Sat 28 Nov	Colchester United	H	2,893	W 5-1	McLaughlin	Edwards	Mousinho	Flanagan	O'Connor
DECEMBER									
Tue 1 Dec	Millwall	H	2,888	W 2-1	McLaughlin	Edwards	Mousinho	Flanagan	McCrorry
Sat 12 Dec	Gillingham	A	6,230	W 3-0	McLaughlin	Edwards	Mousinho	Flanagan	McCrorry
Sat 19 Dec	Doncaster Rovers	H	4,130	D 3-3	McLaughlin	Edwards	Mousinho	Flanagan	McCrorry
Sat 26 Dec	Bradford City	A	15:00						
Mon 28 Dec	Swindon Town	H	15:00						
JANUARY									
Sat 2 Jan	Blackpool	H	15:00						
Sat 16 Jan	Coventry City	A	15:00						
Sat 23 Jan	Shrewsbury	H	15:00						
Tue 26 Jan	Peterborough Utd	A	19:45						
Sat 30 Jan	Rochdale	A	15:00						
FEBRUARY									
Sat 6 Feb	Bradford City	H	15:00						
Fri 12 Feb	Chesterfield	H	19:45						
Sat 20 Feb	Southend United	A	15:00						
Sat 27 Feb	Walsall	H	15:00						
MARCH									
Tue 1 Mar	Sheffield United	A	19:45						
Sat 5 Mar	Crewe Alexandra	A	15:00						
Sat 12 Mar	Fleetwood Town	H	15:00						
Sat 19 Mar	Port Vale	A	15:00						
Fri 25 Mar	Oldham Athletic	H	15:00						
Mon 28 Mar	Millwall	A	15:00						
APRIL									
Sat 2 Apr	Bury	H	15:00						
Sat 9 Apr	Scunthorpe United	A	15:00						
Sat 16 Apr	Barnsley	H	15:00						
Tue 19 Apr	Wigan Athletic	H	19:45						
Sat 23 Apr	Colchester United	A	15:00						
Sat 30 Apr	Gillingham	H	15:00						
MAY									
Sun 8 May	Doncaster Rovers	A	12:30						

wordsearch answers
 christmas | swindon | santa | presents | rudolph

*All fixture dates & times are subject to change



KEY: YELLOW CARD | RED CARD | FIRST SUB | SECOND SUB | THIRD SUB | GOALSCORERS MARKED WITH A NUMBER | HOME FIXTURES IN BOLD

SUBS

Akins 1	Naylor	Weir	El Khayati	Duffy	Beavon 1	Reilly, Butcher, Lyness, O'Connor, Thiele, Binnom-Williams, Palmer
Akins	Reilly	Butcher	B-Williams	Thiele	Palmer 1	McLaughlin, Cansdell-S, Beavon, El Khayati, Joachim, Naylor, Duffy
Akins	Weir	McCroly	Duffy	El Khayati	Beavon	Reilly, Butcher, Lyness, O'Connor, Thiele, Binnom-Williams, Palmer
Duffy	Weir	Butcher	El Khayati 2	Beavon	Thiele	Akins, Joachim, Naylor, O'Connor, Binnom-Williams, Palmer, Matthews
Duffy	Naylor	Weir	El Khayati 1	Thiele	Beavon 1	Reilly, Akins, Joachim, O'Connor, Binnom-Williams, Palmer, Matthews
Akins	Weir	Butcher	Reilly	Palmer	Joachim	McLaughlin, Edwards, Beavon, El Khayati, McCroly, Thiele, Duffy
Duffy 1	Butcher	Weir	El Khayati	Thiele	Beavon	Akins, Joachim, Naylor, O'Connor, B-Williams, Palmer, Matthews
Akins	Butcher	Weir	Duffy	Palmer	Joachim	McLaughlin, Reilly, Thiele, B-Williams, Austin
Duffy	Weir	Naylor	El Khayati	Beavon	Thiele	Reilly, Akins, Butcher, McCroly, O'Connor, Palmer, Matthews
Weir	Butcher	Akins	Duffy	Binnom-W	Beavon 1	El Khayati, Joachim, Naylor, O'Connor, Thiele, Palmer, Matthews
Binnom-W	Butcher	Duffy	Akins	Weir	Beavon 1	El Khayati, Joachim, Naylor, O'Connor, Thiele, Palmer, Matthews
Weir	Butcher	Akins	Duffy	El Khayati	Beavon 1	Joachim, Naylor, Thiele, Binnom-W 1, Palmer, Flanagan, Matthews
Weir	Butcher	El Khayati	Duffy	Binnom-W	Beavon	Cansdell-S, Akins, Joachim, Naylor, Thiele, Palmer, Matthews
Weir	Naylor	Akins	Duffy	El Khayati	Beavon	Cansdell-S, Butcher, Joachim, Thiele, Binnom-W, Palmer, Matthews
Weir	Butcher	Akins	Duffy	Palmer	Beavon	Cansdell-S, Naylor, Ismail, Thiele, Binnom-W, Flanagan, Matthews
Akins	Weir	Butcher	Palmer	El Khayati	Beavon	Cansdell-S, Joachim, Naylor, Thiele, Duffy, Binnom-W, Matthews
Naylor	Weir	Akins	Duffy	El Khayati	Thiele	Butcher, Joachim, Ismail, Binnom-W, Palmer, Flanagan, Matthews
Naylor 1	Weir	Akins	Duffy	El Khayati 1	Thiele	Butcher, Joachim, Ismail, O'Connor, Palmer, Flanagan, Matthews
Naylor	Butcher	Akins	Duffy	El Khayati 1	Thiele	Reilly, Beavon, Joachim, O'Connor, Palmer, Flanagan, Matthews
Akins	Butcher	Palmer	El Khayati	Duffy	Thiele	McLaughlin, Charles, Reilly, Beavon, Joachim, Slade, Austin
Reilly	Naylor	Akins	Duffy	El Khayati	Beavon	Butcher, Joachim, O'Connor, Thiele, Palmer, Flanagan, Matthews
Weir	Naylor	Butcher	Duffy	Beavon	El Khayati 1	Charles, Reilly, Akins, Joachim, Thiele, Palmer, Matthews
Weir	Duffy 1	Naylor 1	El Khayati 1	Binnom-W	Beavon	Reilly, Akins 1, Butcher, McCroly, Thiele 1, Palmer, Matthews
Naylor	O'Connor	Butcher	El Khayati 1	Duffy	Beavon	Reilly, Akins, Joachim, Thiele, Binnom-W, Palmer, Matthews
Naylor	Weir	Butcher	Duffy	Beavon	El Khayati	Cansdell-S, Reilly, Akins 1, O'Connor 1, Thiele, Binnom-W, Matthews
O'Connor	Duffy 1	Butcher 2	Naylor	El Khayati	Beavon	Cansdell-S, Reilly, Akins, Thiele, Binnom-W, Palmer, Matthews



Belvedere Park Juniors U11s are today's flagbearers



Physiotherapy

Accelerated recovery accessible to all

What we treat:

- » Back and neck pain
- » Knee pain
- » Shoulder pain
- » Ankle pain
- » Foot pain
- » Postural abnormalities
- » Sprains and strains
- » Whiplash
- » Soft tissue and tendon injuries
- » Sports injuries
- » Rehabilitation programmes
- » Neurological conditions

Call us today on 01283 576333

Access treatment through your private medical insurance or self fund.

www.spireperform.com/st-georges-park



@PerformSGP



Perform
Part of Spire Healthcare

OFFICIAL HEALTHCARE PARTNER



CELEBRATING 20 YEARS OF SALES AND SERVICE

RAYGAR ARCHITECTURAL & ENGINEERING SUPPLIES LTD.

www.raygar.co.uk



AZTEC HANDLE

Aluminium SCP lever on a screw on round rose

FROM
£6.99
PER SET



Code	Description	Price	
		1-9	10+
3841	SCP lever on a screw on round rose	£7.99	£6.99

AZTEC PCP HANDLE

Aluminium PCP lever on a screw on round rose

FROM
£6.99
PER SET



Code	Description	Price	
		1-9	10+
3840	PCP lever on a screw on round rose	£7.99	£6.99

COLIMA HANDLE

Aluminium SCP/PCP lever on a screw on round rose

FROM
£6.99
PER SET



Code	Description	Price	
		1-9	10+
3842	SCP/PCP lever on a screw on round rose	£7.99	£6.99

PLUS HANDLE

Aluminium SCP/PCP lever on a screw on round rose

FROM
£6.99
PER SET



Code	Description	Price	
		1-9	10+
3843	SCP/PCP lever on a screw on round rose	£7.99	£6.99

ASTRAL HANDLE

Aluminium SNP lever on a screw on round rose

FROM
£6.99
PER SET



Code	Description	Price	
		1-9	10+
3844	SNP lever on a screw on round rose	£7.99	£6.99

A FULL RANGE OF ACCESSORIES IS AVAILABLE



FREE DELIVERY ON 20 MILE RADIUS OF DERBY

4 SIMPLE WAYS TO PLACE AN ORDER

Visit our Showroom: Mon - Fri: 7.30am - 5.00pm • Sat: 8.00am - 12noon



01332 207222 (Press Option 1 for Sales)



01332 207333



sales@raygar.co.uk

BREWERS vs SWINDON



BURTON ALBION

NIGEL CLOUGH **MANAGER**

JON McLAUGHLIN	01	<input type="radio"/>
PHIL EDWARDS	02	<input type="radio"/>
SHANE CANSDELL-SHERRIFF	03	<input type="radio"/>
JOHN MOUSINHO	04	<input type="radio"/>
GEORGE TAFT	05	<input type="radio"/>
DARIUS CHARLES	06	<input type="radio"/>
CALLUM REILLY	07	<input type="radio"/>
ROBBIE WEIR	08	<input type="radio"/>
STUART BEAVON	09	<input type="radio"/>
LUCAS AKINS	10	<input type="radio"/>
NASSER EL KHAYATI	11	<input type="radio"/>
CALUM BUTCHER	12	<input type="radio"/>
AURÉLIEN JOACHIM	13	<input type="radio"/>
DAMIEN McCRORY	14	<input type="radio"/>
TOM NAYLOR	15	<input type="radio"/>
DEAN LYNNESS	16	<input type="radio"/>
MARCUS HARNES	17	<input type="radio"/>
ZELI ISMAIL	18	<input type="radio"/>
ANTHONY O'CONNOR	19	<input type="radio"/>
TIMMY THIELE	20	<input type="radio"/>
MARK DUFFY	21	<input type="radio"/>
JEROME BINNOM-WILLIAMS	22	<input type="radio"/>
MATTY PALMER	23	<input type="radio"/>
LIAM SLADE	24	<input type="radio"/>
KELVIN MAYNARD	25	<input type="radio"/>
MARK SHELTON	26	<input type="radio"/>
SAM AUSTIN	27	<input type="radio"/>
SAM HORNBY	28	<input type="radio"/>
TOM FLANAGAN	30	<input type="radio"/>
REMI MATTHEWS	31	<input type="radio"/>
NATHAN FERGUSON	32	<input type="radio"/>



SWINDON TOWN

MANAGER MARTIN LING

<input type="radio"/>	01	LAWRENCE VIGOUROUX
<input type="radio"/>	02	NATHAN THOMPSON
<input type="radio"/>	03	BRANDON ORMONDE-OTTEWILL
<input type="radio"/>	04	FABIEN ROBERT
<input type="radio"/>	05	JORDAN WILLIAMS
<input type="radio"/>	06	JORDAN TURNBULL
<input type="radio"/>	07	DRISSA TRAORÉ
<input type="radio"/>	08	YASER KASIM
<input type="radio"/>	10	NICKY AJOSE
<input type="radio"/>	11	KEVIN STEWART
<input type="radio"/>	12	MOMAR BANGOURA
<input type="radio"/>	14	WES THOMAS
<input type="radio"/>	15	JAMES BROPHY
<input type="radio"/>	16	JORDAN STEWART
<input type="radio"/>	17	BEN GLADWIN
<input type="radio"/>	18	LOUIS THOMPSON
<input type="radio"/>	19	JEREMY BALMY
<input type="radio"/>	20	JONATHAN OBIKA
<input type="radio"/>	21	WILL RANDALL
<input type="radio"/>	22	LEE MARSHALL
<input type="radio"/>	23	LEE COOK
<input type="radio"/>	24	JERMAINE HYLTON
<input type="radio"/>	25	TYRELL BELFORD
<input type="radio"/>	26	ANTON RODGERS
<input type="radio"/>	27	BRAD BARRY
<input type="radio"/>	28	ELLIS IANDOLO
<input type="radio"/>	29	RAPHAEL ROSSI BRANCO
<input type="radio"/>	32	HENRIK OJAMAA
<input type="radio"/>	34	ADAM EL-ABD
<input type="radio"/>	37	JAMIE CALVIN

MATCH OFFICIALS
 REFEREE: M. Brown
 ASSISTANT: T. Bramall
 ASSISTANT: G. Mellor
 4TH OFFICIAL: S. Meredith

COMING SOON

 BURTON ALBION VS BLACKPOOL
 SATURDAY 2ND JANUARY
 SKY BET LEAGUE ONE
 KICK-OFF 15:00PM

SHREWSBURY TOWN
 BURTON ALBION VS SHREWSBURY TOWN
 SATURDAY 23RD JANUARY
 SKY BET LEAGUE ONE
 KICK-OFF 15:00PM

BURTON ALBION
 BURTON ALBION VS BRADFORD CITY
 SATURDAY 6TH FEBRUARY
 SKY BET LEAGUE ONE
 KICK-OFF 15:00PM



MATCH SPONSOR



Needwood Foods

MATCHBALL SPONSOR



Ian Barker Butchers

MAN OF MATCH SPONSOR



Needwood Foods

PROGRAMME SPONSOR



Rubicon Print

